

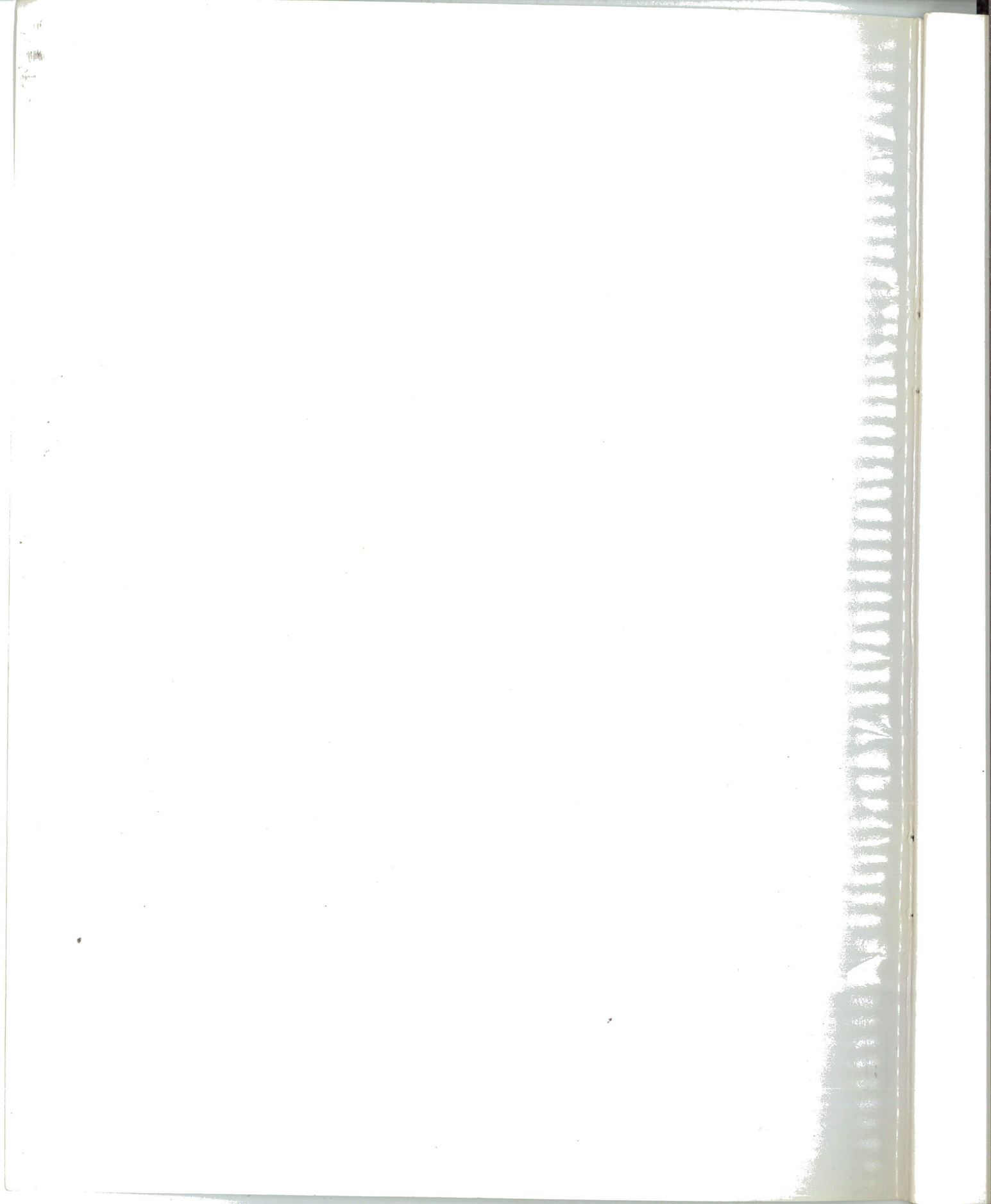
01

**ANNUAL REPORT
2001**

*new millennium's
special issue*



**PAKISTAN SUGAR MILLS ASSOCIATION
ISLAMABAD**



01

**ANNUAL REPORT
2001**

*new millennium's
special issue*



**PAKISTAN SUGAR MILLS ASSOCIATION
ISLAMABAD**

**MANAGEMENT OF
PAKISTAN SUGAR MILLS ASSOCIATION
FOR 2000-2002**

CENTRAL EXECUTIVE COMMITTEE

1. ✓ Mr. Ashraf W Tabani	Chairman ✓
2. Ch. Mohammad Zaka Ashraf	Vice Chairman
3. Mr. Shunaid Qureshi	Vice Chairman
4. Mr. Iskander M Khan	Vice Chairman
5. Mr. Mohammad Anwar Wahla	Member
6. Mr. Aslam Faruque	Member
7. Mr. Abdul Qadir Khattak	Member

SECRETARIAT

MR. K. ALI QAZILBASH
SECRETARY GENERAL ✓

RASHID PLAZA, JINNAH AVENUE
ISLAMABAD

PHONES: 051- 2270525 & 2823971

FAX: 051- 2274153

E-mail: psma @ center.sdnpk.undp.org

ZONAL COMMITTEES

2000-2002

ZONAL COMMITTEE PUNJAB

- | | | |
|----|----------------------------|-----------------|
| 1. | Ch. Mohammad Zaka Ashraf ✓ | Chairman ✓ |
| 2. | Mr. Mohammad Anwar Wahla ✓ | Member ✓ |
| 3. | Mr. Pervaiz A. Chaudhry | Member ✓ |
| 4. | Mian Shahryar Saigol | Co-opted Member |

Zonal Secretariat

Col. (Retd.) Maqsood Cheema ✓	Secretary
Unit No. 1, Happy Homes	Tel: 042-5710190
38-A, Main Gulberg, Lahore	Fax: 042-5752940

ZONAL COMMITTEE SINDH

- | | | |
|----|----------------------------|----------|
| 1. | Mr. Shunaid Qureshi | Chairman |
| 2. | Mr. Naveed Muhammad Javeri | Member |
| 3. | Mr. Pervaiz Khan | Member |
| 4. | Aslam Farooque | |

Zonal Secretariat

Mr. Umer Latif ✓	Secretary
1st, Floor, Modern Motors House	Tel: 021-5686526 ✓
Beaumont Road, Karachi	Fax: 021-5680344 ✓

ZONAL COMMITTEE N.W.F.P

- | | | |
|----|-------------------------|----------|
| 1. | Mr. Iskander M. Khan | Chairman |
| 2. | Mr. Abdul Qadir Khattak | Member |
| 3. | Ch. M. Ashiq Khalid | Member |

Zonal Secretariat

Premier Sugar Mills &	Tel: 0931-62051-52 ✓
Distillery Co. Ltd, Mardan	Fax: 0931-62989

ANNUAL REVIEW
36TH ANNUAL GENERAL MEETING
22ND OCTOBER 2001

Distinguished members of Pakistan Sugar Mills Association,

I feel privileged in presenting the annual report of PSMA Centre, at the 36th Annual General Meeting for the season ending 2000-01, and welcome all members attending this meeting. The concluding year was a very active year on many fronts. For two successive years, the country faced a short fall in sugarcane production after two high production years. Unaware of the severe effects of the drought the sugar industry was optimistic for production 1999-2000, based on officially confirmed plantation area of just over 1.0 million hectares. Later the damages due to the drought resulted in a colossal loss, and even sugarcane production officially estimated at 46.3 million proved higher than the actual crop production of about 40.0 million tonnes.

As soon as the fall in the yield was evident, interruption in sugarcane supplies became a regular phenomenon by the farmers in an effort to increase the sugarcane prices and inspite of all the stoppages, the crushing season was very short. Unfortunately, MINFAL still maintains the sugarcane production figures as 46.3 million tonnes, yet to confuse the future statistics.

As the production for 1999-2000 was known, sugar imports started to meet the short fall. The market average retail prices remained stable as long as the mills held stocks. PSMA is still being branded for the price havoc towards the end of year 2000, where as the mills hardly had anything to sell as shown in the table below. A total of 420,600 tonnes of sugar was imported, supplemented by 371,400 tonnes of carried over stocks of 1998-99.

Sugar Stocks and Retail Prices
 During the Price Hike Period Aug - Dec 2000

Month Ending	Stocks at Mills	Av. Retail Price During the month
31 Jul'00	217,717	25.93
30 Aug'00	88,478	28.05
30 Sep'00	27,274	27.81
31 Oct' 00	NIL	29.19
30 Nov' 00	133,258	30.24
31 Dec' 00	456,986	26.68

Production 2000-2001

The year 1999-2000 having ended with crises, the prospects for the year 2000-2001 also did not look any better. With practically no carry forward stocks and sugarcane plantation area further reduced by 5 % to 960,000 hectares, sugarcane production estimates were as low as 43.0 million tonnes. Water supply in the rivers remained extremely low, while the drought continued more severely in its second consecutive year.

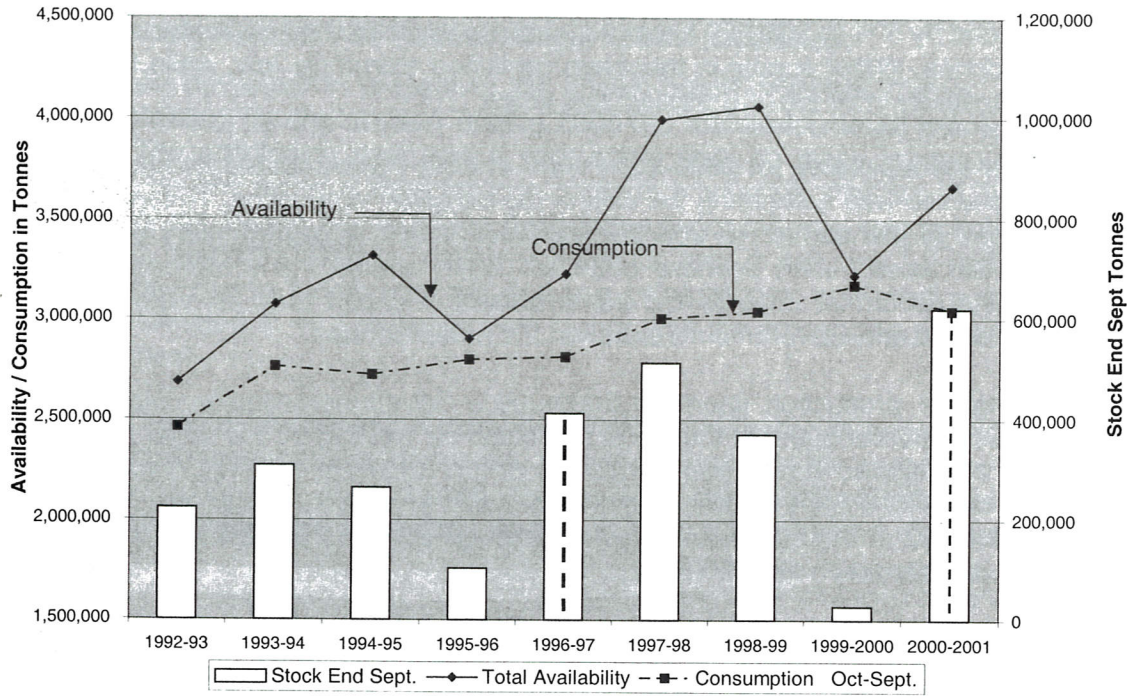
No sooner the estimates for 2000-2001 were evident PSMA started its efforts to curb the sugar imports which was hampering the sale of the domestic production. Though domestic retail price dropped to just above RS 26/- per kg. Government remained jittery on the price issue and would not listen mainly because of its own faulty statistics and estimates. At early stages the decision on further imports and enhancement in import duty fell victim to PSMA production figure of 2.4 and Government's stand on 2.1 million tonnes.

Foreseeing the production short fall 2000-2001, Government earlier discussed and approved duty free import of 600,000 tonnes of raw sugar for refining by the sugar mills. Since this was the first occasion to import such a quantity of raw sugar for refining, objections rose from within the ranks of PSMA on the credibility of such a venture. It was assumed that it could effect the interest of the sugarcane growers, though time has proven that it has had a positive effect on the plantation area 2001-02.

With the production estimates at 2.4 million tonnes, supplemented by 0.55 million tonnes of refined sugar from raw, and 378,000 tonnes already imported, Government was twice approached in Feb' 2001 and apprised of the availability, now having reached to 3.33 million tonnes. Therefore no further import of refined sugar would be required and hence be stopped. In this connection a press conference was also held at the end of the 1st Extra Ordinary General Meeting on 28th Feb' 2001, at Islamabad.

Our plea did not satisfy the Government and import of refined sugar continued with the excuse of controlling the retail prices, while during the same season sales tax was increased by 1.5%. After convincing the commerce Minister a ban was imposed on the import of sugar from India which was being dumped at a subsidized price. Before the ban was imposed 413,000 tonnes of sugar was already imported, and 206,000 tonnes more got through after the ban. This resulted in one of the highest carry forward stock of over 620,000 tonnes at end Sept, (see graph over leaf) ever recorded, inspite of the warnings to curb the import and avoid 1996- 97 like situations. High stocks shown below against the years 1997-98 and 1998-99 are from the high production, exporting years

Sugar Balance
Refined Value 1992-2001
(Sugar Year Oct-Sept.)



The year 2000-2001 ended up with an availability of 3.70 million tonnes with a consumption of about 3.06 million tonnes. Catering, for the month of October, a surplus of over 350,000 tonnes is foreseen in November. This will also effect the trader's stocks of around 300,000 tonnes held in the market that needs shedding in the month of Oct - Nov.

With such a carry forward stock, prices are likely to slip further in the coming months with fresh buying in very limited quantities, as the harvest approaches. So the damage already done to the sugar industry at the cost of over spending foreign exchange worth minimum US \$ 80 million, can not be denied. Efforts are still on for the imposition of 30% import duty on sugar, to provide protection to the sugar industry, though the suggestion has been dropped few times at ECC. The policy negates the much spoken free market economy, when 85% inputs of sugar manufacturing are dictated, and the sale price is controlled by import threats with low tariff. In its meeting of 17th Sept.'2001, the ECC withdrew the concession of 10% duty on sugar and brought it to 20% ad val. Its effectiveness will be observed in the coming months.

Pakista

Campa

sugarc
 improve
 Plantati
 give a p
 is exper
 stress a

3.1 milli
 the year
 that furt

studied
 due to fu

the pres
 the unw
 duty wil
 internati
 further fa
 The indu

Domest

V
 consump
 most cor
 have bot
 PSMA C
 capita co
 4.72 % p
 increase
 drinks, co
 contributi

A
 major fac
 have bee

Campaign 2001-2002: -

As reported and discussed in the 3rd Extra Ordinary General Meeting the prospects for sugarcane production are bright for the season 2001-02. Plantation area has surprisingly improved over the last two years, while Government target estimates were lower by 20%. Plantation area now improved to 1,032,000 hectares with an expected improved yield could give a production of over 48.0 million tonnes. The major supply of around 33.0 million tonnes is expected from Punjab. Though plantation area in Sindh has slightly improved, signs of water stress are still there on sugarcane in certain areas.

At this situation the sugar production is estimated around or over 3.1 million tonnes, with carry forward stock of 620,000 tonnes at end Sept. Thus availability for the year 2001-02 would be around 3.70 million tonnes and therefore Government was advised that further import of raw sugar would not be required.

Government's proposal for import of raw sugar for re-export of refined sugar was studied and it was conveyed back that at present such a venture is economically not viable, due to furnace oil prices.

The main feature for the year 2001-02 would still be the tariff rate on import. In case the present import duty enhanced on 17th Sept.'2001, is insufficient and is ineffective to curb the unwanted imports, further efforts will be made for its enhancement. The present rate of duty will provide some protection to the sugar industry for the time being. However the international market which is under pressure, is to be watched vigilantly. In case there is further fall, Government is to be approached to act swiftly to avert crises in domestic industry. The industry's concern has already been communicated to the Federal Government.

Domestic consumption

Various estimates have been in use in the past to ascertain and forecast domestic consumption. Thumb rule formula based on population and per capita consumption is the one most commonly used, which is a wild guess, as the population and per capita consumption have both been growing simultaneously with no reliable data available. The available data at PSMA Centre shows that based on survey conducted for four years, during 1987-88, per capita consumption of refined sugar for 1987-88 was estimated at 10.7 kg with an increase of 4.72 % per year. Thus per capita consumption for 1990-91 was projected at 12.29, but actual increase was much higher, because of the increasing demand in the manufacture of soft drinks, confectioneries and bakery products. Large availability factor and urbanization has also contributed to the increase in demand of refined sugar in comparison to the use of gur.

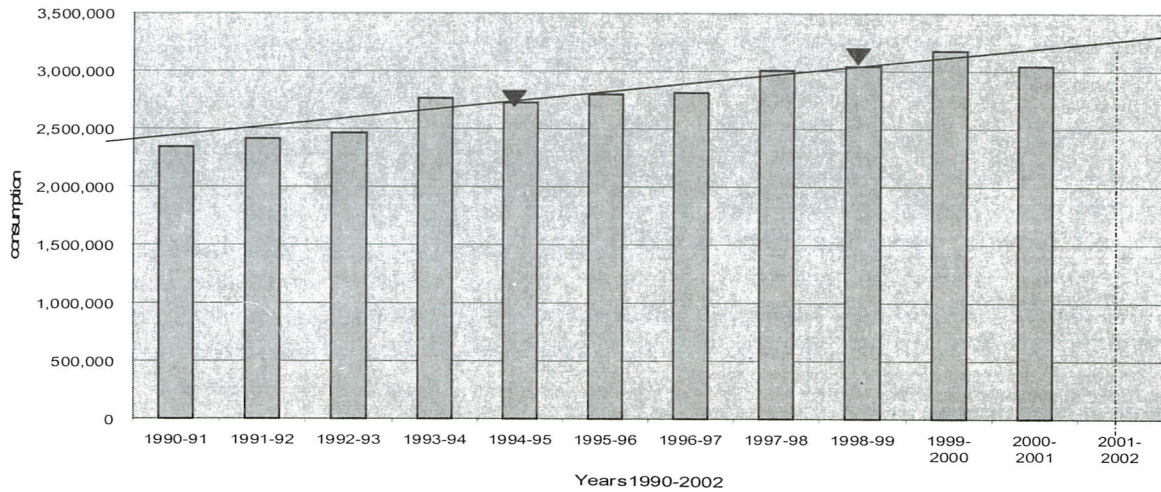
At present 21- 22 kg is being used as per capita consumption, but the second and major factor of population remains uncertain to arrive at a consumption figure. Such estimates have been creating growing controversies in planning imports and exports.

In a recent study, by adding up the monthly sales and imports, including unrecorded imports of raw sugar, annual consumption and availability for ten years has been worked out precisely. This data, when projected gives a pretty close consumption forecast as tabulated and drawn below for the sugar years (Oct- Sept).

The projected graph indicates 2.90 % annual increase in the past ten years. The total consumption records around 80,000 tonnes increase per year on average in the recent past, that would need regular monitoring for alteration to provide a fair indicator.

The data also proves that the estimated per month consumption given to the Government for 2000-01 as 260,000 tonnes was on target. The actual supply Oct-Sept. ended with an average of 254,000 tonnes due to low lifting and excessive supply.

Pakistan Sugar Mills Association
Consumption (1990-91 To 2001-2002) & Projected
Sugar Year Oct to Sept.



Years	1990-91	1991-92	1992-93	1993-94	1994-95	1995-96	1996-97	1997-98	1998-99	1999-00	2000-01
Mill Sale	1,908,838	2,296,698	2,387,929	2,837,038	3,046,092	2,631,170	2,083,625	3,455,456	3,683,436	2,773,479	2,422,477
Imports	433,320	116,741	75,156	47,669	4,274	166,432	728,501	26,345	3,697	420,621	627,992
Exports	0	0	0	(121,565)	(327,591)	(100)	0	(477,331)	(648,230)	(22,160)	0
Total Consump	2,342,158	2,413,439	2,463,085	2,763,142	2,722,775	2,797,502	2,812,126	3,004,470	3,038,903	3,171,940	3,050,469

- * Mills sale include previous year's carry over stock and export quantity
- * Consumption / market supply Oct-Sept. (12 months)
- * Refined value of Raw unrecorded imports 1996-97 & 1997-98 added to imports

2001-02 reports boost to continu

recover due to faced in deactiva became such an and bitter sugarca continue directly destruct from sul

about 1 tonnes. and exp sugar, s sugar fo only, if t

estimate sugar m heavy e as 386% export te

about 5.

from the domestic

unrecorded
worked out
tabulated

. The total
percent past,

en to the
al supply
supply.



2001-
2002

2000-01

2,422,477

627,992

0

3,050,469

Global Sugar Scenario: -

World sugar production initially indicated a small deficit in the year 2001-02, but not enough to have any significant effect on the world sugar prices. Current reports suggests world sugar production as balanced with the consumption, due to positive boost to next year's crop in many countries. Balance of end stock of 30.0 million tonnes will continue to dominate the depressed prices.

The key to 2001-02 production will be the extent to which Brazil's production had recovered after last year's drought. They went through largest sugar crisis three years back due to excess supply. At totally deregulated market and abandonment by the Government it faced losses of over U.S. \$ 3.0 billion. As a result producers reduced plantation area, deactivated uneconomical areas, reduced investments, promoted discounts etc. The crisis became worst when the International sugar price fell below U.S. \$ 150/- in 1999. Even with such an abased price, Brazil exported its 11.0 million tonnes in 1999. Their crisis brought hard and bitter lessons to Brazil and other sugar producing countries. Brazil produces the cheapest sugarcane, sugar and alcohol in the world. The domestic economic situation in Brazil, with continued devaluation is playing a great part on the International sugar prices, effecting directly the countries like ours with high production cost. Even U.S. sugar industry fears destruction by Brazilian imports if restrictions were removed. Now it accuses Brazil for, right from subsidies to the use of child labour etc.

India's sugar production 2001-02 is likely to be the same as in the current year i.e. about 18.3 million tonnes, while the country already has a surplus stock of 11.0 -12.0 million tonnes. Unable to export its desired surplus quantity, it now aims to raise the ban, to produce and export raw sugar in future. At present producing mostly low grade 150 ICUMSA white sugar, several Mills aim to diversify their sugar product to 45 ICUMSA refined sugar and raw sugar for export purpose. It could export more of its refined sugar into International markets only, if the prices were US\$ 250 /- and above to match its production cost.

European Union pessimistic reports for the forthcoming harvest sugar production is estimated at 15.1 million tonnes, down from 16.7 million tonnes. European Union panel for sugar management very carefully ascertains the production and monitors export quota with heavy export refunds for its surplus production. In July last the subsidy recorded was as high as 386/- Euros per tonne. A maximum export rebate of Euros 455/- is forecast for October export tenders.

Next year Thai crop is predicated to be higher by 10 percent promising a production of about 5.50 million tonnes.

China is expecting a sugar production of 7.2 - 7.5 million tonnes, considerably higher from the current year's 6.20 million tonnes. The production is still insufficient to meet its domestic needs. With surprisingly low per capita consumption of 8 Kg, a sizeable part is

consumed by the soft drink industry. Chinese have been switching their sweetener choice from granulated sugar to artificial sugar. Accepting the use of illegal artificial sweetener could harm Chinese Government's standing with respect to WTO accession, which as expected may increase its per capita consumption higher.

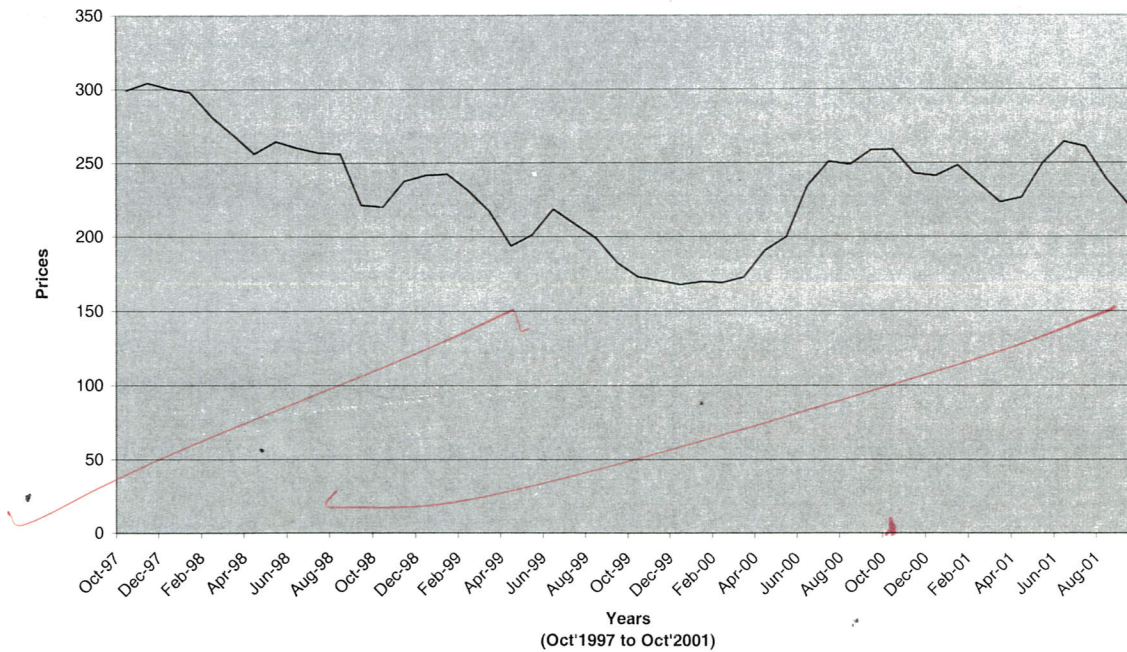
During the last four seasons International prices shown hereunder remained depressed due to high stocks. Many of the large importers had imposed protective barriers in order to shield their own producers from extreme low market prices. Un stable price attitude is observed due to the stock build- ups.

**WORLD MONTHLY REFINED SUGAR PRICES
U.S. \$ PER TONNE**

Season	OCT	NOV	DEC	JAN	FEB	MAR	APR	MAY	JUNE	JULY	AUG	SEP
1997-98	299.37	304.44	300.69	298.05	281.74	269.61	256.38	264.54	260.13	256.82	256.16	221.55
1998-99	220.45	237.65	241.83	242.27	231.47	217.14	193.78	201.27	218.91	208.77	199.29	182.53
1999-00	173.05	170.41	167.76	169.75	169.09	172.61	190.91	199.73	234.34	250.87	248.89	258.81
2000-01	259.25	242.94	241.39	248.45	236.15	223.39	226.85	249.76	264.38	261.10	238.82	222.31

Handwritten: 234.99

World Monthly Refined Sugar Prices
US\$ per Tonne



oice from
ould harm
cted may

epressed
n order to
ttitude is

Effects of WTO regime and Globalization: -

In the past couple of years anti globalization protestors have not missed any venue for a major economic meet. The flaw is severely felt by the bulk of the third world. Developed countries are pursuing reprehensive trade practices in a manner where on the one hand, they are establishing their regional free market zones, and on the other hand asking comparatively weaker developing countries to open their gates without any restriction for imports and services from the developed countries. This could end up with developing countries being treated as main suppliers of the cheap raw material and importer of manufactured goods.

Recent news that SAARC will take a joint stand on the Ministerial level, and the fact that Government of Pakistan, has set up nine committees to study WTO regime, to identify adversely effected items in the new trade order, is received with appreciation by this Association. We hope the sensitivity of the sugar industry is well under-stood by the Government and it is included in the items that need protection. Our industry being agro-based industry is the most vulnerable even now.

JG	SEP
16	221.55
29	182.53
89	258.81
82	222.31

Events of the Year : -

- As the situation demanded three Extra Ordinary General Meetings were held.
- As many as thirteen meetings were held during the year with the Government of Pakistan at Federal Minister's level to apprise them of sugar situation and problems faced by the sugar industry.
- During March 2000, on Minister for Industry's call a meeting was held at SMEDA Lahore, where after discussing problems of the sugar industry a proposal was moved by Mr. Razzak Dawood of the long awaited demand of PSMA for "Long Term Vision" based on the mechanism for improvement in yield and recovery, as sugar "Productivity Enhancement Programme". PSMA submitted its proposal to the Expert Advisory Cell appointed by the Ministry of Industry.

Subsequent meetings were held in this connection and the draft proposal was discussed. Special on site meetings, of the Minister for Industry and Minister for Food and Agriculture were arranged in Sindh and Punjab Zones, in an effort to introduce and discuss the programme with growers.

Pivotal point of the proposal was to establish "development zones" with the sugar mills as model farming areas with incentives to the farmers and the millers. The workability of the proposal is still not finalized and after the last meeting in May' 2001, further progress is not known.

- In May 2000 and later in June 2000 a strong move was made, by the MINFAL with an expression that the sugarcane act needs be fully revised, as the Act in its present form is obsolete. Millers and growers were called to these meetings, but after active and objective discussions the move fizzled out without any result and future reference.
- MINFAL after having run a trial farm of sugar beet in Sindh tried to propagate for sugar beet plantation to replace sugarcane on the basis of its low irrigation water demand. While such trials are to be carried for atleast three years, the Millers were not taken into confidence for conversion and additional equipment to handle beet slicing. Moreover it was known that in NWFP the beet slicing starts at the end of sugarcane crushing, whereas its maturity in Sindh would be over lapping the cane crushing. PSMA did not attend the presentation at MINFAL.
- After approval of the Central Executive Committee, the case for increase in the rate of annual subscription and sharing of PSMA Centre with Zones, was put up to the General Body at the 3rd Extra Ordinary General Meeting held at Lahore on 11th August 2001 and was approved unanimously. Thus item 5(a) & 5(b) of the Article of Association stand amended.
- Hon. Minister for Commerce and Industry joined us at the 3rd Extra Ordinary General Meeting in Lahore, where beside discussions on different aspects of the sugar industry, Mr. Razzak Dawood asked for PSMA's comments on the Support Price for sugarcane. He

informed the members that proposal for enhancement of sugarcane support price is on the anvil, while a general support exists for the free market mechanism. He also informed the members that instead of support price a system of " Indicative price" is also under consideration. He asked the members to convey to him their comments after detail discussion at zonal level. Later ECC in its meeting held on 17th Sept. enhanced the sugarcane price to Rs. 42 / 43 as indicative price.

The sugar industry is faced with the persistent attitude that lacks objective approach on sensitive matters. Factual figures are ignored during policy making where a consistent laid down sugar policy workable during the years of short fall and abundance is needed. We are optimistic that better and proper attention will be given to the sugar industry based on its merits.

To conclude, I would like to thank the Zonal Chairmen, Central and Zonal Executives Committees, all members of PSMA and the secretariat of PSMA offices for their co-operation and support.

22nd October, 2001

Ashraf W. Tabani
Chairman PSMA

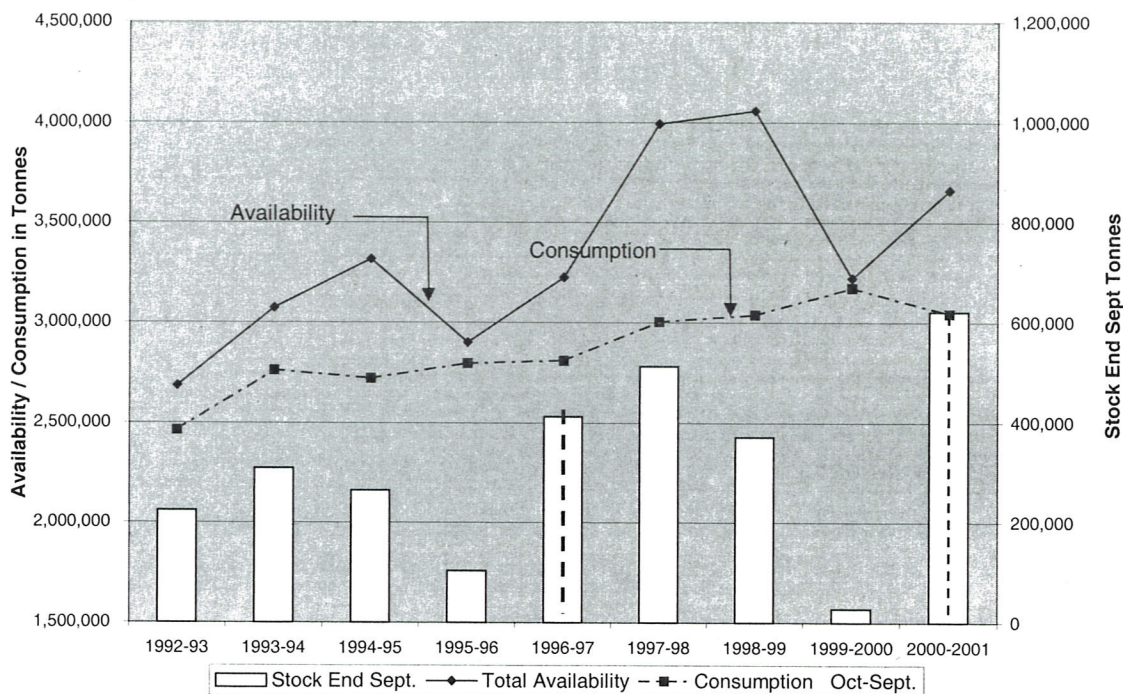
ANNEXTURE TO THE ANNUAL REVIEW 2001

THE FOLLOWING STATISTICS / INFORMATION COVERING THE PAST DECADE, PREPARED BY THE PSMA ' C ' IS ATTACHED FOR THE GUIDANCE OF OUR MEMBERS AND OTHERS CONCERNED WITH THE POLICY MAKING. THIS WILL BE PRINTED IN OUR ANNUAL REPORT 2001 IN ADDITION TO THE ROUTINE INFORMATION PROVIDED.

- 1. Sugar Balance 1992-93 to 2000-01.**
- 2. Average Monthly Retail Prices 10 -Years.**
- 3. Average World Refine Sugar Prices 10 - Years.**
- 4. Consolidated Month-wise Marketing 1994-95 to 2000-01.**
- 5. Working of the Month-wise Marketing.**
- 6. Sugar Cane Support Price /Sugar Retail Price.**
- 7. Month-wise Refined Sugar Imports.**
- 8. 10-Years Sugar Consumption Projected.**
- 9. Month-wise Stock Position 1994-95 to 2000-01.**

**PAKISTAN SUGAR MILLS ASSOCIATION (Centre)
ISLAMABAD**

Sugar Balance
Refined Value 1992-2001
(Sugar Year Oct-Sept.)



Years	Total Availability	Consumption Oct-Sept.	Stock End Sept.
1992-93	2,686,975	2,463,085	223,890
1993-94	3,072,451	2,763,142	309,309
1994-95	3,315,055	2,722,775	264,689
1995-96	2,901,155	2,797,502	103,553
1996-97	3,225,416	2,812,126	413,290
1997-98	3,994,863	3,004,470	513,062
1998-99	4,058,522	3,038,903	371,389
1999-2000	3,221,374	3,171,940	27,274
2000-2001	3,662,879	3,042,231	620,791

Pakistan Sugar Mills Association
Monthly Retail Sugar Prices

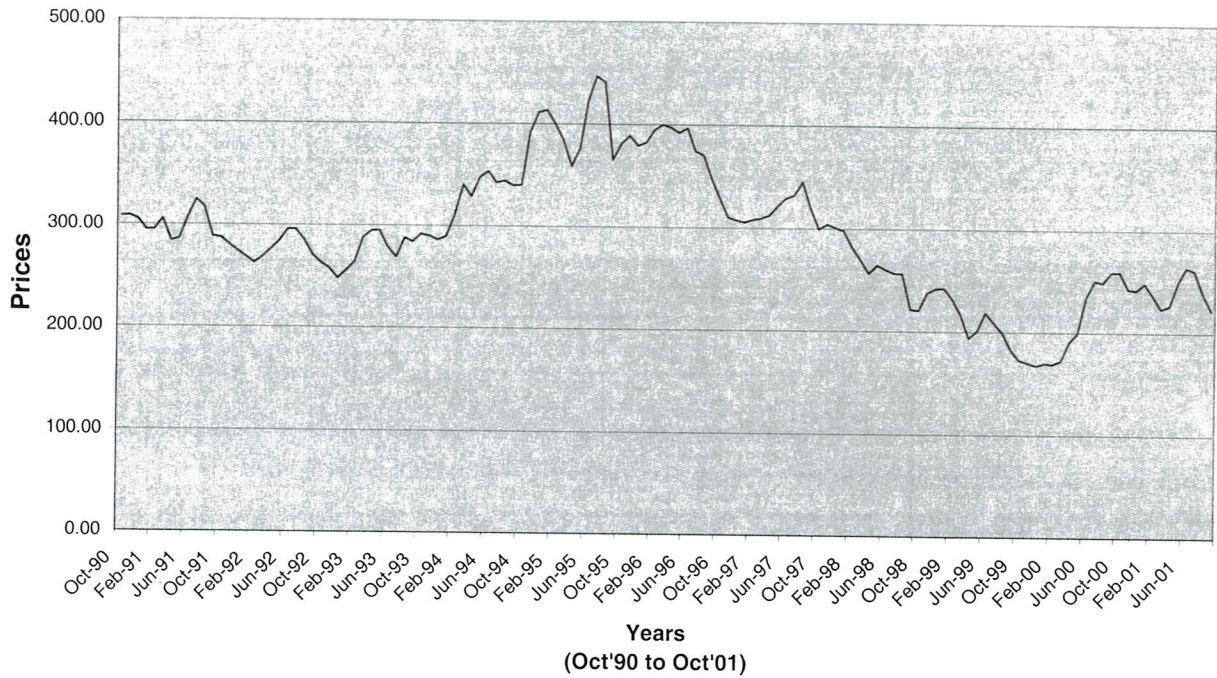


Months	1991-92	1992-93	1993-94	1994-95	1995-96	1996-97	1997-98	1998-99	99-2000	2000-01
October	12.25	12.47	13.30	13.73	15.34	22.31	21.17	18.41	21.06	29.19
November	12.01	12.14	12.92	14.37	15.21	22.39	20.67	19.30	20.12	30.24
December	11.79	11.75	12.36	13.77	14.98	22.11	19.19	18.90	18.76	26.68
January	11.52	11.87	12.13	13.45	16.10	21.01	18.73	19.13	19.66	26.51
February	11.45	12.04	12.04	13.23	17.60	21.22	18.44	19.10	20.91	25.70
March	11.43	12.08	12.00	13.22	18.77	19.88	17.77	18.96	21.48	25.80
April	11.43	12.09	12.25	13.49	18.50	20.69	17.41	19.55	22.31	26.41
May	11.62	12.47	12.95	14.62	18.43	22.23	18.43	20.40	22.82	26.16
June	11.97	13.15	13.62	14.93	18.56	21.55	18.36	20.34	25.26	26.75
July	11.52	13.79	13.55	15.22	18.92	21.59	18.05	20.26	25.93	26.51
August	12.54	13.97	13.28	16.34	20.53	21.37	18.36	20.41	28.05	26.17
September	12.64	13.66	13.25	15.97	21.36	21.20	18.40	20.79	27.81	24.67

Season	1991-92	1992-93	1993-94	1994-95	1995-96	1996-97	1997-98	1998-99	99-2000	2000-01
<i>Av. Retail Price</i>	11.85	12.62	12.80	14.36	17.86	21.46	18.75	19.63	22.85	26.73

Source: As recorded by MINFAL &
Federal Bureau of Statistic

World Monthly Refined Sugar Prices
US\$ per Tonne



000	2000-01
1.06	29.19
0.12	30.24
8.76	26.68
9.66	26.51
0.91	25.70
1.48	25.80
2.31	26.41
2.82	26.16
5.26	26.75
5.93	26.51
8.05	26.17
7.81	24.67

MONTHS	1990-91	1991-92	1992-93	1993-94	1994-95	1995-96	1996-97	1997-98	1998-99	1999-00	2000-01
OCT	308.41	287.25	263.22	291.66	340.82	381.16	327.81	299.37	220.45	173.05	259.25
NOV	308.85	280.19	257.49	289.89	391.74	388.87	310.61	304.44	237.65	170.41	242.94
DEC	305.32	274.68	248.23	285.92	411.14	379.39	307.53	300.69	241.83	167.76	241.39
JAN	295.18	268.51	255.72	289.67	413.34	382.70	305.76	298.05	242.27	169.75	248.45
FEB	295.40	262.78	263.88	311.05	400.56	394.61	308.19	281.74	231.47	169.09	236.15
MAR	305.54	268.73	287.69	340.82	384.69	399.90	309.73	269.61	217.14	172.61	223.39
APR	284.38	276.44	294.96	328.91	359.55	397.25	312.82	256.38	193.78	190.91	226.85
MAY	286.36	284.16	295.18	347.65	375.87	392.18	322.08	264.54	201.27	199.73	249.76
JUNE	307.31	295.62	278.65	353.82	422.38	396.81	329.13	260.13	218.91	234.34	264.38
JULY	324.72	295.62	268.95	342.58	446.85	374.54	332.22	256.82	208.77	250.87	261.10
AUG	317.45	285.70	287.69	344.34	441.12	370.58	345.22	256.16	199.29	248.89	238.82
SEP	288.57	270.93	284.38	339.93	365.51	346.99	319.87	221.55	182.53	258.81	222.31

Average 302.29 279.22 273.84 322.19 396.13 383.75 319.25 272.46 216.28 200.52 242.90

Source: LIFFE: London / MINFAL

2.85 26.73

Pakistan Sugar Mills Association
consolidated Monthwise refined sugar supplies
For Sugar Year 1994-95 to 2000-2001

Years	1994-95	1995-96	1996-97	1997-98	1998-99	1999-2000	2000-2001
Carry forward Stock 30 Sept.	309,309	264,689	103,553	413,290	513,062	371,389	27,274
31 Oct.	199,830	213,249	258,447	182,918	220,861	232,772	176,378
30 Nov.	194,493	244,223	122,733	323,391	136,319	280,369	240,201
31 Dec.	218,693	275,993	239,454	321,652	371,931	305,095	232,828
31 Jan.	283,284	287,881	370,810	327,335	257,098	287,317	395,367
28 Feb.	299,269	227,800	210,968	277,230	234,498	228,966	278,193
31 Mar.	341,980	240,343	284,688	364,382	254,938	318,060	360,169
30 Apr.	260,362	170,413	294,893	245,292	286,780	210,794	255,638
31 May.	189,165	247,192	174,019	179,230	244,483	303,938	253,131
30 Jun.	181,141	213,451	298,243	181,782	280,095	244,429	255,534
31 Jul.	203,435	244,973	177,067	228,327	243,261	273,939	191,816
31 Aug.	151,182	184,449	208,918	203,321	251,588	261,329	200,439
30 Sep.	199,941	247,535	171,887	169,610	257,051	224,932	210,775
Total Supply / consumption	2,722,775	2,797,502	2,812,126	3,004,470	3,038,903	3,171,940	3,050,469
Average Per Month	226,900	233,100	234,300	250,400	253,200	264,300	254,200

Note: * The above monthwise supplies include
(Sale from Mills+Imports (-) Export)

* carry forward stock assumed sold in season's start.

Year
Carry Stock
31 Oct
30 Nov
31 Dec
31 Jan
28 Feb
31 Mar
30 Apr
31 May
30 Jun
31 Jul
31 Aug
30 Sep
Total Mills
Total
Total

PAKISTAN SUGAR MILLS ASSOCIATION

MONTHLY MARKETING OF SUGAR (IMPORT / MILLS SALE / EXPORT)
DURING SUGAR YEAR 1994-95 _ 2000-2001

Import
Mills Sale
Export

Years	1994-95	1995-96	1996-97	1997-98	1998-99	1999-2000	2000-2001
Carry Over Stock	309,309	264,689	103,553	413,290	513,062	371,389	27,274
31 Oct.	393 199,541 104	213,249 -	154,894 103,553	15,058 167,860	338 288,403 67,880	409 236,962 4,599	149,104 27,274
30 Nov.	155 198,808 4,470	477 243,746	67,167 55,566	335 323,056	191 187,688 51,560	215 284,268 4,114	143,861 96,340
31 Dec.	824 223,263 5,394	345 275,648	42,323 197,131	765 320,887	236 491,314 119,619	178 308,092 3,175	45,346 187,482
31 Jan.	1,387 286,374 4,477	543 287,338	57,959 312,851	491 326,844	448 401,962 145,312	592 294,852 8,127	40,416 354,951
28 Feb.	172 308,041 8,944	236 227,564	17,962 193,006	410 290,384 13,564	83 335,355 100,940	332 229,675 1,041	34,221 243,972
31 Mar.	334 352,408 10,762	409 239,934	22,650 262,038	279 389,842 25,739	171 324,689 69,922	561 318,044 545	35,288 324,881
30 Apr.	334 326,639 66,611	344 170,069	55,234 239,659	374 290,708 45,790	404 340,341 53,965	1,206 209,908 320	27,893 227,745
31 May.	96 289,972 100,903	461 246,831 100	21,685 152,334	657 236,456 57,883	752 254,789 11,058	12,354 291,733 149	39,890 213,241
30 Jun.	173 277,860 96,892	260 213,191	162,839 135,404	566 248,872 67,656	28 299,714 19,647	49,734 194,785 90	41,632 213,902
31 Jul.	326 225,463 22,354	29,019 215,954	27,102 149,965	328 300,622 72,623	411 247,539 4,689	59,223 214,716	29,791 162,025
31 Aug.	43 156,359 5,220	35,626 148,823	72,012 136,906	7,082 318,099 121,860	342 251,481 235	132,089 129,240	17,312 183,127
30 Sep.	37 201,364 1,460	98,712 148,823	26,675 145,212	- 241,826 72,216	293 260,161 3,403	163,728 61,204	23,238 187,537
Total Import	4,274	166,432	728,501	26,345	3,697	420,621	627,992
Mills Sale	3,046,092	2,631,170	2,083,625	3,455,456	3,683,436	2,773,479	2,422,477
Total Export	327,591	100	0	477,331	648,230	22,160	0
Total Supply	2,722,775	2,797,502	2,812,126	3,004,470	3,038,903	3,171,940	3,050,469

-: Refined value of Raw unrecorded imports 1996-97 & 97-98 added to imports

Monthwise Import of REFINED SUGAR
Season 1994-95 _ 2000-2001

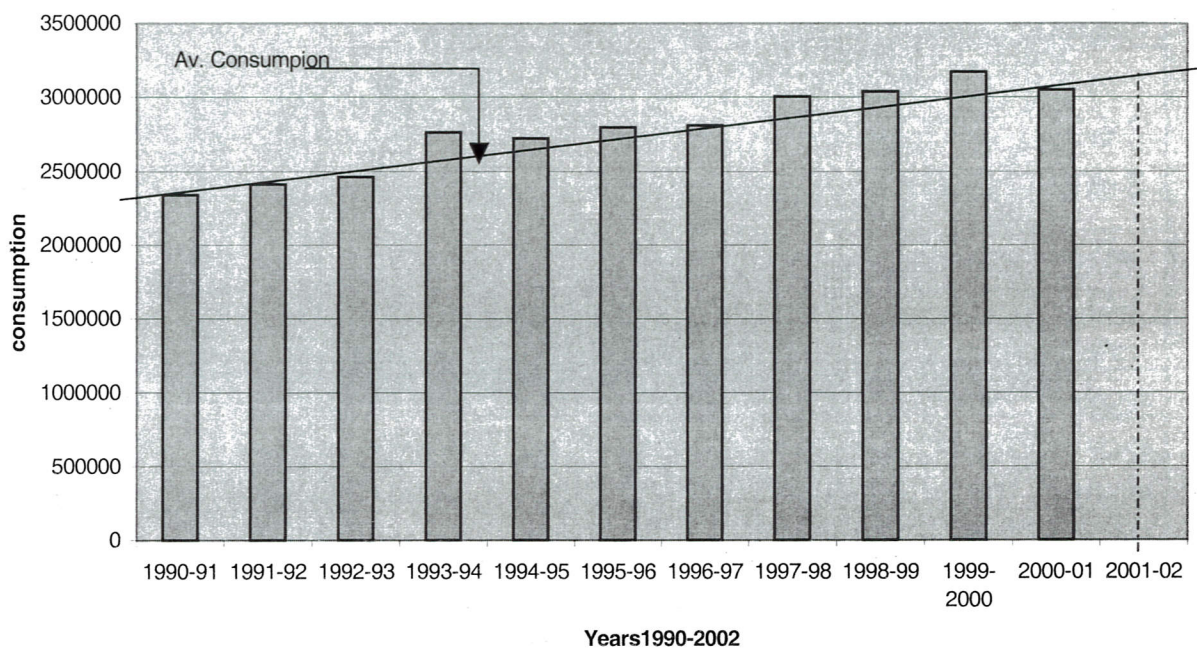
Quantity in Tonnes

Month	1994-95	1995-96	1996-97	1997-98	1998-99	1999-2K	2000-2001
OCT	393	-	154,894	15,058	338	409	149,104
NOV	155	477	67,167	335	191	215	143,861
DEC	824	345	42,323	765	236	178	45,346
JAN	1387	543	57,959	491	448	592	40,416
FEB	172	236	17,962	410	83	332	34,221
MAR	334	409	22,650	279	171	561	35,288
APR	334	344	55,234	374	404	1,206	27,893
MAY	96	461	21,685	657	752	12,354	39,890
JUN	173	260	162,839	566	28	49,734	41,632
JUL	326	29,019	27,102	328	411	59,223	29,791
AUG	43	35,626	72,012	7082	342	132,089	17,312
SEP	37	98,712	26,675	-	293	163,728	23,238
Total	4,274	166,432	728,502	26,345	3,697	420,621	627,992

Note:- Refined value of Raw unrecorded imports 1996-97 & 1997-98 added to imports

Pa
3
3
2
2
1
10
consumption
Years
Mill Se
Import
Export
Tot
Const

Pakistan Sugar Mills Association
Consumption (1990-91 To 1999-2002) & Projected
Sugar Year Oct to Sept.

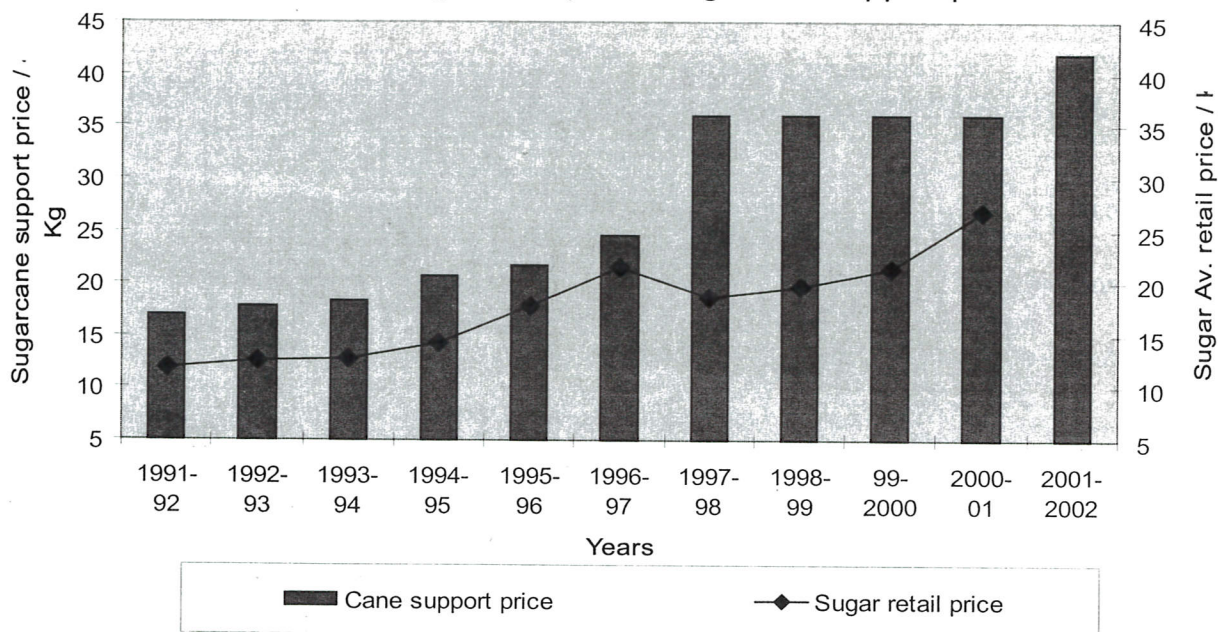


000-2001
149,104
143,861
45,346
40,416
34,221
35,288
27,893
39,890
41,632
29,791
17,312
23,238
627,992

Years	1990-91	1991-92	1992-93	1993-94	1994-95	1995-96	1996-97	1997-98	1998-99	1999-00	2000-01
Mill Sale	1,908,838	2,296,698	2,387,929	2,837,038	3,046,092	2,631,170	2,083,625	3,455,456	3,683,436	2,773,479	2,422,477
Imports	433,320	116,741	75,156	47,669	4,274	166,432	728,501	26,345	3,697	420,621	627,992
Exports	0	0	0	(121,565)	(327,591)	(100)	0	(477,331)	(648,230)	(22,160)	0
Total Consump	2,342,158	2,413,439	2,463,085	2,763,142	2,722,775	2,797,502	2,812,126	3,004,470	3,038,903	3,171,940	3,050,469

- * Mills sale include previous year's carry over stock and export quantity
- * Consumption / market supply Oct-Sept. (12 months)
- * Refined value of Raw unrecorded imports 1996-97 & 1997-98 added to imports

Pakistan Sugar Mills Association
 Sugar Season 1991-2002
 Season's Av. Sugar retail price / Sugarcane support price



Sugarcane Support Price
 &
 Season's Av. Sugar Retail price

Years	Cane Support Price	Sugar Av. Retail Price
1991-92	16.75 / 17.00	11.85
1992-93	17.50 / 17.75	12.62
1993-94	18.00 / 18.25	12.8
1994-95	20.50 / 20.75	14.36
1995-96	21.50 / 21.75	17.86
1996-97	24.25 / 24.50	21.46
1997-98	35.00 / 36.00	18.75
1998-99	35.00 / 36.00	19.63
99-2000	35.00 / 36.00	21.45
2000-01	35.00 / 36.00	26.73
2001-2002	42.00 / 43.00	

Pakistan Sugar Mills Association

Monthwise Sugar Stock Position

At the Sugar Mills

Season 1994-95 _ 2000-01

Period As On	1994-95	1995-96	1996-97	1997-98	1998-99	1999-2K	2000-01
30-09 opening Stock	309,309	264,689	103,553	413,290	513,062	371,389	27,274
31-10	109,768	51,410	NIL	245,430	224,659	134,426	NIL

30-11	148,264	197,426	98,090	130,830	87,706	169,840	133,258
31-12	507,300	538,678	402,582	542,494	445,325	609,141	456,986
31-01	923,632	750,869	606,848	1,020,113	814,145	900,711	750,621
28 / 29-02	1,216,381	983,469	917,397	1,478,972	1,240,350	1,182,094	1,329,702
31-03	1,405,559	1,142,302	1,192,713	1,827,204	1,659,232	1,111,389	1,544,345
30-04	1,368,599	1,046,325	1,107,372	1,842,125	1,673,501	903,963	1,419,020
31-05	1,113,039	818,592	957,057	1,617,183	1,432,080	618,400	1,285,014
30-06	847,678	617,152	845,363	1,376,697	1,130,080	431,974	1,127,514
31-07	622,412	401,199	695,398	1,073,027	882,804	217,717	982,986
31-08	466,052	204,502	558,502	754,923	631,548	88,478	804,846
30-09 End Stock	264,689	103,553	413,290	513,062	371,389	27,274	620,791

Export	327,591	100	-	447,331	648,230	22,160	NIL
Refined sugar Import during	4,274	166,432	728,501	26,345	3,697	420,621	627,992

Stock figures:

- * sugar season 1st Oct- 30th Sept.
- * are declared stocks at sugar mills.
- * does not include stocks in market and in the pipeline
- * does not include imported sugar
- * under ***** line figures indicate new season stocks
- * shaded blocks indicate excessive stocks.
- * Refined value of raw sugar imported 1996-97 & 1997-98 are included
- * Raw sugar imported (2000-01) refined by mills included.

APPENDIX TO 2001 ANNUAL REPORT
LIST OF ATTACHED STATISTICAL TABLES

TABLE 1 :	SUGARCANE CRUSHING, SUGAR PROD. & REC % 1980-2001	24- 26
TABLE 2 :	(NWFP) BEET SLICED, SUGAR MADE & REC. % 1980-2001	26,27
TABLE 3 :	CONSOLIDATED SUGAR PRODUCTION IN PAKISTAN. 1980-2001	27,28
TABLE 4 :	CANE MOLASSES PRODUCTION IN PAKISTAN	28
TABLE 5 (1) :	SUGARCANE SUPPORT PRICE, MILL-GATE DELIVERY	29
TABLE 5 (2) :	SUGARCANE SUPPORT PRICES Vs. AV. RETAIL SUGAR PRICE	30
TABLE 6 (1) :	(PUNJAB) MILL-WISE SUGARCANE CRUSHING, SUGAR PROD. REC. % AND MOLASSES PROD. 2000-2001	31,32
TABLE 6 (2) :	(N.W.F.P) MILL-WISE SUGARCANE CRUSHING, SUGAR PROD. REC. % AND MOLASSES PROD. 2000-2001	32
TABLE 6 (3) :	(SINDH) MILL-WISE SUGARCANE CRUSHING, SUGAR PROD. REC. % AND MOLASSES PROD. 2000-2001	33
TABLE 6 (4) :	(N.W.F.P.) MILL-WISE BEET SLICING, SUGAR PROD. REC. % AND MOLASSES PROD. 2000-2001	34
TABLE 6(5) :	PROVINCE WISE TOTAL PRODUCTION OF PAKISTAN (SUMMARY 2000-2001)	34
TABLE 7 (1) :	ESTIMATED GUR EQUIVALENT PROD. FROM SUGARCANE NOT MILLED.	35
TABLE 7(2) :	DOMESTIC SWEETENER CONSUMPTION, SUGAR +GUR EQU.	36
TABLE 8 :	SUGARCANE PLANTATION AREA, PROD. YIELD AND UTILIZATION BY MILLS	36-39
TABLE 9 :	IMPORT OF SUGAR.	40
TABLE 10 :	EXPORT OF SUGAR.	40
TABLE 11 :	EXPORT OF MOLASSES	41
TABLE 12 :	EXPORT OF FERMENTATION ETHYL ALCOHOL.	42
TABLE 13 :	CENTRAL EXCISE DUTY / SALES TAX CONTRIBUTION BY SUGAR INDUSTRY	43
:	LIST OF FORMER CHAIRMEN PSMA 1965-2002	44
:	LIST OF SUGAR MILLS WITH LOCATIONS & ADDRESSES	45-51
: INTERNATIONAL INFORMATION MAIN SUGAR PRODUCING / CONSUMING COUNTRIES		
:	YIELD & RECOVERY	52
:	NATIONAL SUGAR CROP/ MARKETING YEAR	53
:	CONSUMPTION PER CAPITA	54
:	RANKING OF MAIN SUGAR PRODUCING COUNTRIES	55
:	SUGAR AND SUGARCANE SUMMARY SEVEN YEARS I- II	56-57

TABLE 1
SUGARCANE CRUSHING, SUGAR PRODUCTION
& RECOVERY % 1980-81 TO 2000-2001

PAKISTAN

YEAR	NO. OF MILLS	CANE CRUSHED TONNES	SUGAR MADE TONNES	RECOVERY %
1980-81	34	9,143,842	821,357	8.98
1981-82	35	14,591,482	1,268,334	8.69
1982-83	36	12,511,427	1,110,575	8.87
1983-84	39	13,489,213	1,133,643	8.40
1984-85	39	14,692,507	1,304,972	8.88
1985-86	40	12,063,292	1,102,316	9.14
1986-87	41	14,485,439	1,255,839	8.67
1987-88	44	20,304,087	1,743,505	8.59
1988-89	45	21,707,520	1,817,935	8.37
1989-90	48	20,501,339	1,828,904	8.92
1990-91	51	22,603,696	1,908,838	8.44
1991-92	53	24,795,815	2,296,698	9.25
1992-93	61	27,274,806	2,375,289	8.71
1993-94	63	34,181,899	2,900,523	8.49
1994-95	66	34,193,290	2,983,101	8.72
1995-96	66	28,151,434	2,449,598	8.70
1996-97	68	27,152,918	2,378,751	8.76
1997-98	71	41,062,268	3,548,953	8.64
1998-99	71	42,994,911	3,530,931	8.21
1999-00	69	28,982,711	2,414,746	8.33
2000-01	65	29,408,879	2,466,788	8.39
<i>2000-2001</i>	69	<i>36,708,638</i>	<i>3,197,745</i>	<i>8.71</i>
PUNJAB				
1980-81	18	4,774,775	408,820	8.56
1981-82	18	6,761,354	563,198	8.33
1982-83	19	5,178,693	432,919	8.36
1983-84	20	6,895,365	557,595	8.09
1984-85	20	7,740,805	652,892	8.43
1985-86	20	4,448,866	371,145	8.34
1986-87	20	6,406,035	535,289	8.36
1987-88	20	9,547,071	777,938	8.15
1988-89	21	8,288,070	666,983	8.05
1989-90	23	9,151,085	765,133	8.36
1990-91	24	12,094,630	933,721	7.72

Cont....Punjab				
YEAR	NO. OF MILLS	CANE CRUSHED TONNES	SUGAR MADE TONNES	RECOVERY %
1991-92	25	11,745,224	1,012,297	8.62
1992-93	32	13,433,045	1,103,531	8.22
1993-94	34	20,066,265	1,634,154	8.14
1994-95	36	20,975,836	1,771,084	8.44
1995-96	37	16,992,633	1,375,789	8.10
1996-97	37	16,293,237	1,292,912	7.94
1997-98	39	25,905,541	2,065,886	7.97
1998-99	39	25,081,066	2,033,356	7.80
1999-00	37	16,829,610	1,315,637	7.82
2000-01	35	18,068,437	1,437,450	7.96
2001-02	37	25,252,609	2,152,175	8.52

SINDH

1980-81	11	3,538,651	336,705	9.51
1981-82	12	6,453,312	586,381	9.08
1982-83	12	6,277,489	585,088	9.32
1983-84	14	5,633,357	505,528	8.97
1984-85	14	6,075,392	576,194	9.48
1985-86	15	7,267,768	701,978	9.66
1986-87	16	7,792,994	695,452	8.92
1987-88	19	9,395,135	844,869	8.99
1988-89	19	11,922,974	1,013,600	8.50
1989-90	20	10,457,782	983,087	9.40
1990-91	22	9,597,884	902,311	9.40
1991-92	22	11,956,718	1,187,576	9.93
1992-93	24	12,723,563	1,175,195	9.24
1993-94	24	13,031,888	1,172,507	9.00
1994-95	24	12,037,995	1,107,880	9.20
1995-96	24	10,341,372	1,008,127	9.75
1996-97	27	10,314,835	1,028,169	9.97
1997-98	27	13,853,107	1,374,477	9.92
1998-99	29	15,095,412	1,353,012	8.96
1999-00	25	10,856,757	996,317	9.18
2000-01	25	10,493,428	968,175	9.23
2001-02	27	10,162,607	940,959	9.26

VERY

N.W.F.P.

YEAR	NO. OF MILLS	CANE CRUSHED TONNES	SUGAR MADE TONNES	RECOVERY %
1980-81	05	830,461	75,832	9.13
1981-82	05	1,376,816	118,755	8.62
1982-83	05	1,055,245	92,568	8.77
1983-84	05	960,491	70,520	7.34
1984-85	05	876,310	75,886	8.66
1985-86	05	346,658	29,193	8.42
1986-87	05	286,410	25,098	8.76
1987-88	05	1,361,881	120,698	8.86
1988-89	05	1,496,476	137,352	9.18
1989-90	05	892,472	80,684	9.04
1990-91	05	911,182	72,806	7.99
1991-92	05	1,093,873	96,824	8.85
1992-93	05	1,118,197	96,562	8.64
1993-94	06	1,083,745	93,861	8.66
1994-95	06	1,179,458	104,136	8.83
1995-96	05	817,429	65,682	8.19
1996-97	04	744,845	57,669	7.74
1997-98	05	1,303,619	108,589	8.33
1998-99	05	1,818,433	144,563	7.95
1999-00	05	1,296,344	102,792	7.93
2000-01	05	847,015	61,163	7.22
2001-02	05	1,293,422	104,611	8.09

TABLE 2
BEET SUGAR PRODUCTION, BEET SLICED,
SUGAR MADE & RECOVERY BY NWFP SUGAR MILLS

YEAR	NO. OF MILLS	BEET SLICED TONNES	SUGAR MADE TONNES	REC. %	MOLASSES MADE TONNES
1980-81	04	452,170	32,260	7.13	19,093
1981-82	04	359,945	30,667	8.53	15,530
1982-83	04	205,872	18,043	8.75	8,759
1983-84	04	178,022	15,117	8.22	7,685
1984-85	02	103,137	10,430	10.11	4,070
1985-86	02	135,061	13,969	10.36	5,665

Cont... NWFP					
YEAR	NO. OF MILLS	BET Sliced TONNES	SUGAR MADE TONNES	REC. %	MOLASSES MADE TONNES
1986-87	04	319,300	30,137	9.46	12,836
1987-88	04	455,927	37,843	8.30	19,021
1988-89	04	341,377	31,806	9.32	13,679
1989-90	04	342,198	27,057	7.90	14,443
1990-91	03	282,103	23,312	8.26	8,636
1991-92	03	314,758	29,009	9.21	12,840
1992-93	03	214,950	18,916	8.80	8,649
1993-94	04	242,482	21,933	9.05	9,392
1994-95	04	193,595	18,371	9.49	7,412
1995-96	03	211,670	20,435	9.65	7,738
1996-97	03	166,875	14,610	8.76	6,115
1997-98	02	81,794	6,267	7.66	3,127
1998-99	03	126,123	10,831	8.59	5,069
1999-00	03	187,478	14,618	7.80	7,750
2000-01	03	226,252	17,276	7.64	8,684
2001-02	03	316,041	89,172	9.23	13,376.

TABLE 3
CONSOLIDATED SUGAR PRODUCTION IN PAKISTAN
(IN TONNES)

YEAR	SUGARCANE	BET	RAW	TOTAL
1980-81	821,357	32,212		853,569
1981-82	1,268,334	30,667		1300,620
1982-83	1,110,576	18,043		1,128,619
1983-84	1,133,643	15,117		1,149,147
1984-85	1,304,972	10,430		1,316,519
1985-86	1,102,316	13,969		1,116,285
1986-87	1,255,839	30,137		1,285,976
1987-88	1,743,505	37,843		1,781,348
1988-89	1,817,935	31,806		1,849,741
1989-90	1,828,904	27,057		1,855,961
1990-91	1,908,838	23,312		1,932,150
1991-92	2,296,698	29,009		2,325,707
1992-93	2,375,289	18,916		2,394,205
1993-94	2,900,524	21,933		2,922,457
1994-95	2,983,104	18,370		3,001,472

Table 3.... Cont.

YEAR	SUGARCANE	BEET	RAW	TOTAL
1995-96	2,449,598	20,435		2,470,034 ✓
1996-97	2,378,751	14,610		2,393,361 ✓
1997-98	3,548,953	06,267		3,555,220 ✓
1998-99	3,530,931	10,831		3,541,763 ✓
1999-00	2,414,746	14,618		2,429,364 ✓
2000-01	2,466,788	17,276	531,930	3,015,994
2001-02	3,192,745	29,172	22,111	3,249,029

TABLE 4
MOLASSES PRODUCTION IN PAKISTAN FROM CANE & RAW + Beet
(IN TONNES)

YEAR	PAKISTAN	PUNJAB	SINDH	NWFP
1980-81	375,132	193,836	150,422	30,874
1981-82	647,964	287,639	305,790	54,535
1982-83	533,503	207,986	287,617	38,200
1983-84	614,515	313,383	261,113	40,019
1984-85	677,534	368,252	276,820	32,462
1985-86	545,964	194,166	338,308	13,502
1986-87	666,075	282,729	372,550	10,791
1987-88	1,020,014	479,644	486,860	53,510
1988-89	1,100,591	395,584	649,550	55,457
1989-90	980,087	421,883	526,029	32,175
1990-91	1,119,978	611,033	473,432	35,513
1991-92	1,168,158	545,125	581,683	41,350
1992-93	1,330,419	632,055	652,789	45,575
1993-94	1,694,852	972,827	676,790	45,235
1994-95	1,650,952	1,010,890	592,067	47,994
1995-96	1,361,471	821,298	503,692	36,481
1996-97	1,319,860	798,448	482,636	32,661
1997-98	1,978,801	1,237,940	684,823	56,038
1998-99	2,113,595	1,276,391	760,533	76,670
1999-00	1,397,378	800,536	534,003	62,838
2000-01	1,501,501	901,732	550,605	40,480
2001-02	1,822,959	1,224,905	582,939	67,739 + 13,376

TABLE 5 (1)
SUGARCANE SUPPORT PRICES
MILL-GATE DELIVERY

YEAR	PUNJAB	SINDH	N.W.F.P	QUALITY PREMIUM
1980-81	09.00	09.15	08.75	0.11
1981-82	09.00	09.15	08.75	0.11
1982-83	09.00	09.15	08.75	0.11
1983-84	09.00	09.15	08.75	0.11
1984-85	09.00	09.15	08.75	0.11
1985-86	09.00	09.15	08.75	0.11
1986-87	11.00	11.15	10.75	0.14
1987-88	11.00	11.15	10.75	0.14
1988-89	11.75	12.00	11.60	0.18
1989-90	13.75	14.00	13.50	0.19
1990-91	15.25	15.75	15.25	0.19
1991-92	16.75	17.00	16.75	0.22
1992-93	17.50	17.75	17.50	0.22
1993-94	18.00	18.25	18.00	0.22
1994-95	20.50	20.75	20.50	0.27
1995-96	21.50	21.75	21.50	0.27
1996-97	24.25	24.50	24.25	0.27
1997-98	35.00	36.00	35.00	0.32
1998-99	35.00	36.00	35.00	0.50
1999-00	35.00	36.00	35.00	0.50
2000-01	35.00	36.00	35.00	0.50
2001-02	42.00	43.00	42.00	0.50 (Indicative price)
2002-03	42.00	43.00	42.00	0.50
2003-04	42.00			

Prices are per 40 kg of sugarcane.

TABLE 5(2)
SUGARCANE SUPPORT PRICES IN COMPARISON
WITH SEASON'S AVERAGE RETAIL PRICES

YEAR	PUNJAB	SINDH	NWFP	AVE. SUGAR PRICE/KG
1980-81	9.65	9.81	9.38	10.95
1981-82	9.65	9.81	9.38	10.48
1982-83	9.65	9.81	9.38	9.14
1983-84	9.65	9.81	9.38	8.12
1984-85	9.65	9.81	9.38	7.82
1985-86	11.79	11.95	11.52	8.92
1986-87	11.79	11.95	11.52	9.57
1987-88	12.59	12.86	12.33	9.70
1988-89	12.59	12.86	12.33	9.69
1989-90	13.75	14.00	13.50	11.36
1990-91	15.25	15.75	15.25	11.04
1991-92	16.75	17.00	16.75	11.85
1992-93	17.50	17.75	17.50	12.62
1993-94	18.00	18.25	18.00	12.80
1994-95	20.50	20.75	20.50	14.36
1995-96	21.50	21.75	21.50	17.86
1996-97	24.25	24.50	24.25	21.46
1997-98	35.00	36.00	35.00	18.75
1998-99	35.00	36.00	35.00	19.63
1999-00	35.00	36.00	35.00	22.85
2000-01	35.00	36.00	35.00	26.73

2001-02.

Sugarcane support price is per 40 Kg
Sugar Retail Price is Season's Average

Source: MINFAL

TABLE 6 (1)
MILLWISE SUGARCANE CRUSHING, RAW UTILIZATION
SUGAR PRODUCTION, RECOVERY AND
MOLASSES PRODUCTION FOR SEASON 2000-2001

	PUNJAB	No of Day	Cane Crushed	Prod.	Rec %	Raw Sugar Utilized	Refined Sugar Prod.	Rec %	Total Sugar Prod. C+R	Total Molasses Prod. C+R
1	ADAM	151	379,531	32,369	8.60				32,369	14,515
2	ASHRAF	143	344,377	30,485	8.88				30,485	19,050
3	BABA FARID	138	318,081	22,232	7.00	8,196	7,518	92.00	29,750	16,335
4	BROTHERS	139	716,124	55,480	7.75	2,308	2,216	96.02	57,696	34,896
5	CHANAR	109	520,935	37,589	7.21				37,589	27,805
6	CHAUDHARY	140	620,584	47,508	7.66				47,508	29,975
7	CHISTIA	143	400,129	36,050	8.00				36,050	20,006
8	CRESCENT	136	252,756	17,618	7.00				17,618	12,205
9	FATIMA	142	585,371	46,250	7.90	95,255	88,587	93.00	134,837	32,274
10	FAUJI	145	406,798	31,217	7.68				31,217	20,371
11	PECTO	115	381,682	23,148	6.08	9,495	8,641	91.00	31,789	20,341
12	GOJRA SAM	143	233,304	17,262	7.12	795	741	93.20	18,003	11,704
13	HAMZA	166	684,840	60,837	8.88	46,907	43,794	93.36	104,631	38,183
14	H.WAQAS	135	607,267	46,255	7.62	5,952	5,596	94.01	51,851	32,610
15	HUSEIN	143	435,463	32,130	7.37	9,939	9,197	92.53	41,327	22,250
16	ITTEFAQ	149	557,455	44,440	7.98	2,994	2,807	94.00	47,247	26,958
17	J.D.W	155	643,056	58,602	9.11	14,850	14,329	96.49	72,931	30,815
18	KAMALIA	145	531,692	42,446	8.00	1,677	1,577	94.00	44,023	25,161
19	KASHMIR	144	634,641	52,412	8.25	2,994	2,807	94.00	55,219	29,924
20	KOHINOOR	129	361,843	28,232	7.80	7,286	6,921	94.99	35,153	19,465
21	LAYYAH	126	316,703	20,911	6.60	1,372	1,283	93.51	22,194	15,928
22	NATIONAL	140	467,280	38,000	8.15				38,000	21,507
23	NOON	134	327,467	26,422	8.08	4,454	4,238	95.16	30,660	16,699
24	PAHRANWAL	145	473,155	38,433	8.12				38,433	25,040
25	PATTOKI	140	404,700	29,534	7.30				29,534	19,672
26	PHALIA	129	550,375	44,635	8.11				44,635	26,301
27	PUNJAB	143	444,449	41,836	9.40				41,836	19,786
28	RAMZAN	144	652,998	51,742	7.92				51,742	31,268
29	SHAHTAG	123	698,987	59,428	8.50	7,955	7,514	94.45	66,942	33,709
30	SHAKARGANJ	161	1,054,992	79,126	7.70	28,412	26,423	93.00	105,549	53,601
31	SHEIKHOO	152	729,923	57,617	7.89				57,617	36,037
32	TANDLIANWALA	158	637,033	45,424	7.13	20,911	19,527	93.38	64,951	33,848

Conti

	NO
33	AB
34	IND
35	YO
TOT	
TOT	

N.W.	
36	BA
37	CH
38	FR
39	KL
40	PR
TOT	
TOT	

ContinuedPunjab

NON-MEMBERS										
33	ABDULLAH	135	584,030	45,480	7.77	2,953	2,716	91.97	48,196	28,985
34	INDUS	125	393,899	35,547	9.02				35,547	19,859
35	YOUSAF	132	716,518	60,756	8.48	6,022	5,740	95.30	66,496	34,650
TOTAL 2000-2001			18,068,437	1,437,450	7.96	280,726	262,171	93.39	1,699,622	901,732
TOTAL 1999-2000			16,829,610	1,315,637	7.82	-	-	-	1,315,637	800,536

TABLE 6 (2)

**MILLWISE SUGARCANE CRUSHING, RAW UTILIZATION
SUGAR PRODUCTION, RECOVERY AND
MOLASSES PRODUCTION FOR SEASON 2000-2001**

N.W.F.P	No of Day	Cane Crushed	Prod.	Rec %	Raw Sugar Utilized	Refined Sugar Prod.	Rec %	Total Sugar Prod. C+R	Total Molasses Prod.	
36	BANNU	101	118,835	9,312	7.83	30	28	95	9,340	5,520.00
37	CHASHMA	120	575,032	39,224	6.82	1,500	1,423	95	40,646	29,155
38	FRONTIER	14	6,010	380	6.32	1,490	1,401	94	1,781	299
39	KHAZANA	63	85,673	7,455	8.68				7,455	3,181
40	PREMIER	63	61,465	4,793	7.80	8,866	8,360	94.29	13,153	2,325
TOTAL 2000-2001			847,015	61,163	7.22	11,886	11,212	94.33	72,375	40,480
TOTAL 1999-2000			1,296,344	102,792	7.93	-	-	-	102,792	62,838

TABLE 6 (3)

**MILLWISE SUGARCANE CRUSHING, RAW UTILIZATION
SUGAR PRODUCTION, RECOVERY AND
MOLASSES PRODUCTION FOR SEASON 1999-2000 - 2001**

	SINDH	No of Days	Cane Crushed	Prod.	Rec %	Raw Sugar Utilized	Refined Sugar Prod.	Rec %	Total Sugar Prod. C+R	Total Molasses Prod.C+R
41	AL-ABBAS	138	516,874	48,618	9.40	37,350	34,362	92.00	82,980	30,097
42	AL-ASIF	147	195,530	20,039	10.25	3,153	3,000	95.16	23,039	9,386
43	AL-NOOR	145	592,908	45,150	7.61	29,763	26,754		71,904	31,642
44	ANSARI	129	442,858	43,356	9.80				43,356	23,881
45	ARMYWELFARE	140	387,176	36,547	9.44				36,547	18,985
46	BAWANY	122	297,595	27,906	9.48	3,547	3,276	92.34	31,182	15,101
47	DEWAN	140	747,759	75,075	10.04	21,961	20,830		95,905	38,819
48	DIGRI	142	381,886	36,018	9.44	15,431	14,463	93.85	50,481	22,600
49	FARAN	135	660,237	62,352	9.45	17,856	16,902	94.66	79,253	31,789
50	FAUJI- KH	132	377,231	36,159	9.58	100	94	94.23	36,254	19,392
51	FAUJI- TMK	136	363,887	34,871	9.59	99	93	93.89	34,964	17,829
52	HABIB	137	617,109	50,556	8.18	40,851	38,433		88,989	30,377
53	KHAIRPUR	148	246,742	19,591	7.94				19,591	11,878
54	LARR	141	362,166	36,782	10.15	5,967	5,579	93.50	42,361	19,445
55	MATIARI	129	328,082	30,138	9.18	18,950	17,873	94.47	48,011	16,937
56	MEHRAN	132	543,588	50,008	9.20	12,870	11,936	92.74	61,944	29,142
57	MIRPURKHAS	128	383,144	34,479	8.97	6,399	5,904	92.25	40,383	21,595
58	MIRZA	131	276,103	27,123	9.83				27,123	14,675
59	PANGRIO	136	277,269	27,490	9.91				27,490	14,662
60	RANIPUR	145	300,812	23,394	7.77	7,303	6,748	92.40	30,143	15,896
61	SAKRAND	130	405,532	32,316	7.98	2,989	2,783		35,099	21,500
62	SANGHAR	132	423,193	36,679	8.72	9,418	8,891	94.40	45,570	23,483
63	SERI	144	348,428	32,388	9.31	12,992	11,983	92.35	44,371	18,093
64	SHAHMURAD	143	635,615	63,029	9.90	25,900	23,686		86,715	33,226
65	SINDABADGAR	141	381,705	38,116	9.96	5,192	4,957	95	43,073	20,175
TOTAL :- 2000-2001			10,493,428	968,175	9.23	278,091	258,547	93	1,226,721	550,605
TOTAL :- 1999-2000			10,856,757	996,317	9.18				996,317	534,003

TABLE 6 (4)

**MILL WISE BEET SLICING,
SUGAR PRODUCTION, RECOVERY AND
MOLASSES PRODUCTION FOR SEASON 2000-2001**

N.W.F.P	No of Days	Beet Sliced	Prod.	Rec %	Mol. Prod	Rec %
1 FRONTIER	37	45,237	3,722	8.23	1,054	4.32
2 KHAZANA	37	72,881	6,121	8.40	3,230	4.37
3 PREMIER	38	108,134	7,433	7.21	4,400	4.10
TOTAL: 2000-2001		226,252	17,276	7.64	8,684	3.84
TOTAL :1999-2000		187,478	14,618	7.80	7,750	4.13

TABLE 6(5)

**PROVINCE WISE TOTAL PRODUCTION OF PAKISTAN
SUMMARY 2000-2001**

	CANE CRUSHED	RAW UTILIZED	BEET SLICED	SUGAR (Cane)	SUGAR (Raw)	SUGAR (Beet)	MOL. C+B+R
PUNJAB	18,068,437 28,252,607	280,726 4153	NIL	1,437,450 2,152,175	262,171 3878	NIL	901,732 1,224,905
SINDH	10,493,428 10,762,607	278,091 17,608	NIL	968,175 940,959	258,547 16,349	NIL	550,605 522,939
NWFP	847,015 1,293,422	11,886 2000	226,252 316,041	61,163 104,611	11,212 2,885	17,276 29,172	49,164 75,115
Total 2000-2001	29,408,880	570,703	226,252	2,466,788	531,930	17,276	1,501,501
Total 1999-2000	28,982,711	-	187,478	2,414,746	-	14,618	1,422,663

2001-2002 26,708,638 23,760 316,041 3,197,745 39,111 29,172 1,822,959

TABLE 7(1)
ESTIMATED GUR EQUIVALENT PRODUCTION
FROM SUGARCANE NOT MILLED AFTER 15% DEDUCTION
FOR SEED, FODDER AND WASTAGE ETC.

YEAR	GUR EQUIVALENT	
1980-81	1,905,000	Tonnes
1981-82	1,685,000	Tonnes
1982-83	1,580,000	Tonnes
1983-84	1,519,000	Tonnes
1984-85	1,312,000	Tonnes
1985-86	1,119,300	Tonnes
1986-87	1,100,500	Tonnes
1987-88	766,900	Tonnes
1988-89	959,400	Tonnes
1989-90	954,400	Tonnes
1990-91	853,800	Tonnes
1991-92	600,100	Tonnes
1992-93	688,000	Tonnes
1993-94	653,400	Tonnes
1994-95	827,100	Tonnes
1995-96	875,000	Tonnes
1996-97	709,400	Tonnes
1997-98	346,485	Tonnes
1998-99	332,990	Tonnes
1999-00	511,470 884,000	Tonnes *
2000-01	649,623	Tonnes
2001-02	354,341	Tonnes

- Note:**
- * Gur equivalent is based on 8.5% recovery.
 - * These are not Gur production figures.
 - ☒ PSMA is not in agreement with the cane production 1999-2000, and the balance of 10.40 million tonnes of sugarcane diverted to gur production
 - * (Recovery rate of Gur is 13.5-14.5%)
 -

TABLE 7(2)
SWEETENER CONSUMPTION IN PAKISTAN
SUGAR + GUR EQUIVALENT

Sugar Season Year	CONSUMPTION IN MILLION TONNES			Population	Sweetener Consumption per capita
	Refined Sugar	Gur Equivalent	Total		
1993-94	2.759	0.653	3.412	119.4 121.48	28.57 28.07 29.7
1994-95	2.735	0.827	3.562	122.4 124.49	29.10 28.61
1995-96	2.605	0.875	3.480	125.4 127.51	27.75 27.29
1996-97	2.764	0.709	3.473	128.4 130.56	27.04 26.60
1997-98	3.108	0.346	3.454	131.5 133.61	26.26 25.85
1998-99	3.077	0.333	3.410	134.5 136.64	25.35 24.96
1999-00	3.236	0.884 * -511	4.120 3.747	139.0 139.76	*29.64 26.81
2000-01	3.050	0.649	3.699	140.5 142.86 145.94	26.32 25.89



Due to sugarcane exaggerated figures the Gur equivalent is also controversial

TABLE 8
SUGARCANE PLANTATION AREA, PRODUCTION, YIELD
AND UTILIZATION OF SUGARCANE BY SUGAR MILLS

PAKISTAN YEAR	AREA HECTARES	PRODUCTION TONNES	YIELD PER HECTARE	UTILIZATION % BY SUGAR MILLS
1980-81	824,700	32,359,400	39.24	28.26
1981-82	946,700	36,576,700	38.64	39.89
1982-83	911,700	32,533,500	35.68	38.46
1983-84	896,500	32,487,300	38.25	41.52
1984-85	903,600	32,139,600	35.57	45.71

PAKISTAN YEAR	Contd... AREA HECTARES	PRODUCTION TONNES	YIELD PER HECTARE	UTILIZATION % BY SUGAR MILLS
1985-86	779,800	27,856,300	35.72	43.30
1986-87	762,000	29,925,800	39.27	48.40
1987-88	841,600	33,028,800	39.25	61.47
1988-89	876,900	36,975,700	42.17	58.71
1989-90	854,300	35,493,600	41.55	57.76
1990-91	883,800	35,988,700	40.72	62.80
1991-92	879,800	34,204,000	38.90	72.49
1992-93	884,600	38,058,900	43.02	71.66
1993-94	962,800	44,427,000	46.14	76.93
1994-95	1,009,000	47,168,400	46.75	72.49
1995-96	963,100	45,229,700	47.00	62.24
1996-97	964,500	41,998,400	43.54	65.13
1997-98	1,056,200	53,104,200	50.28	77.32
1998-99	1,155,100	55,191,100	47.78	77.90
1999-00	1,009,800	46,332,600	45.90	62.55
2000-01	960,000	43,590,000	45.41	67.47
<i>2001-02</i>	<i>999,700</i>	<i>48,091,000</i>	<i>48.0</i>	<i>76.83</i>
PUNJAB				
1980-81	597,500	23,733,000	39.72	20.12
1981-82	670,200	25,021,000	37.33	27.02
1982-83	628,300	20,088,200	33.34	25.78
1983-84	613,700	22,835,900	37.21	30.20
1984-85	626,100	20,959,000	33.48	36.93
1985-86	510,600	16,755,100	32.81	26.55
1986-87	487,200	18,477,700	37.93	34.67
1987-88	535,300	19,406,200	36.25	49.20
1988-89	529,600	19,493,700	36.81	42.57
1989-90	501,100	18,682,900	37.29	48.98
1990-91	525,600	19,633,400	37.35	61.60
1991-92	516,900	18,580,800	35.95	63.21
1992-93	536,100	20,044,800	37.39	67.02
1993-94	596,200	24,510,000	41.11	81.87
1994-95	656,700	28,268,000	43.00	74.20
1995-96	605,600	26,880,000	44.40	63.22
1996-97	604,200	24,010,200	39.74	67.86
1997-98	685,300	32,110,600	46.86	80.67
1998-99	780,300	33,382,800	42.78	78.12
1999-00	672,100	27,081,300	40.30	62.14
2000-01	615,000	26,740,000	43.48	67.57
<i>2001-02</i>	<i>657,000</i>	<i>31,803,000</i>	<i>48.4</i>	<i>79.40</i>

ATION %
AR MILLS

SINDH

YEAR	AREA HECTARES	PRODUCTION TONNES	YIELD PER HECTARE	UTILIZATION % BY SUGAR MILLS	
1980-81	136,000	5,007,300	36.82	70.67	
1981-82	174,000	7,462,700	42.89	86.47	
1982-83	180,600	7,545,700	41.78	83.19	
1983-84	177,300	7,357,100	41.50	76.57	
1984-85	180,700	7,427,400	41.11	81.79	
1985-86	177,400	7,733,200	42.46	96.48	
1986-87	182,700	7,906,100	43.27	98.57	
1987-88	207,100	9,574,800	46.23	98.12	
1988-89	247,900	13,110,500	52.89	97.54	
1989-90	250,700	12,360,000	49.30	84.61	
1990-91	253,099	12,511,135	49.43	76.71	
1991-92	255,280	14,240,476	55.78	83.00	
1992-93	248,000	13,556,800	54.66	93.85	
1993-94	265,800	15,420,000	58.01	84.51	
1994-95	249,700	14,310,300	57.30	84.12	
1995-96	254,400	13,737,200	54.00	75.28	
1996-97	251,200	13,110,600	52.19	78.68	
1997-98	261,600	15,990,600	61.16	86.58	
1998-99	270,800	17,050,700	62.96	88.53	
1999-00	230,600	14,290,800	62.00	75.97	
2000-01	239,000	12,050,000	50.42	87.08	
	<i>8007.82.</i>	<i>94,000.</i>	<i>11,416,000.</i>	<i>47.4.</i>	<i>89.90.</i>
N.W.F.P					
1980-81	90,500	3,598,000	39.76	23.08	
1981-82	101,200	4,057,200	40.09	33.94	
1982-83	100,300	4,017,600	40.06	26.27	
1983-84	104,700	4,065,300	38.83	23.63	
1984-85	95,900	3,722,400	38.83	23.54	
1985-86	91,400	3,553,100	38.07	9.76	
1986-87	91,600	3,518,500	38.41	8.14	
1987-88	98,700	4,020,500	40.73	33.87	
1988-89	98,900	4,349,000	43.97	38.26	
1989-90	102,100	4,427,300	43.36	20.16	
1990-91	104,600	4,516,100	43.17	20.18	
1991-92	107,000	4,563,200	42.64	23.97	
1992-93	99,900	4,428,400	44.33	25.25	
1993-94,	100,300	4,470,000	44.57	24.25	
1994-95	102,100	4,562,200	44.70	25.86	
1995-96	102,500	4,583,000	44.70	17.84	
1996-97	108,400	4,841,600	44.66	15.38	

NWFP Contd...

YEAR	AREA HECTARES	PRODUCTION TONNES	YIELD PER HECTARE	UTILIZATION % BY SUGAR MILLS
1997-98	108,600	4,956,500	45.64	26.30
1998-99	103,300	4,719,500	45.68	38.53
1999-00	106,300	4,917,100	46.30	26.36
2000-01	106,000	4,800,000	45.28	17.64
<i>2001-02</i>	<i>101,000</i>	<i>4,128,600</i>	<i>47.4</i>	<i>26.94</i>
BALUCHISTAN				
1986-87	500	23,500	47.00	-
1987-88	500	27,300	54.60	-
1988-89	500	22,500	45.00	-
1989-90	500	23,400	46.80	-
1990-91	500	23,600	47.20	-
1991-92	600	26,300	43.83	-
1992-93	600	28,900	48.17	-
1993-94	500	25,000	50.00	-
1994-95	500	27,900	55.80	-
1995-96	600	29,500	49.20	-
1996-97	700	36,000	51.43	-
1997-98	700	37,500	53.57	-
1998-99	700	38,100	54.40	-
1999-00	800	43,400	54.20	-
2000-01	<i>700</i>	N.A		
<i>2001-02</i>	<i>700</i>	<i>33,000</i>	<i>50.00</i>	

SOURCE: Federal Bureau of Statistics.

SUGARCANE PLANTATION AREA (HECTARES)
1987-88 TO 2000-2001

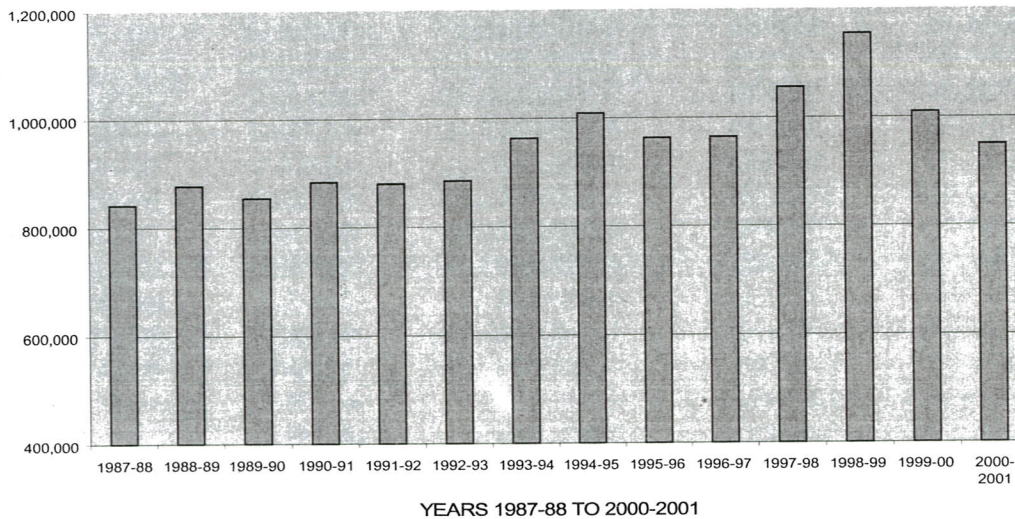


TABLE 9
IMPORT OF REFINED SUGAR

YEAR	QUANTITY TONNES	VALUE IN "000" RS.	AVERAGE PRICE RS. PER TONNE.
1981-82	19,700	115,698	5,873
1982-83	3,342	4,196	4,248
1983-84	253	1,079	4,264
1984-85	-	-	-
1985-86	258,777	929,698	3,601
1986-87	749,450	2,762,616	3,686
1987-88	251,159	958,148	3,815
1988-89	43,380	204,258	4,709
1989-90	210,954	1,920,210	9,103
1990-91	433,320	3,583,000	8,269
1991-92	116,741	914,117	7,830
1992-93	75,156	552,000	7,345
1993-94	47,669	444,105	9,316
1994-95	5,188	68,761	13,254
1995-96	3,214	50,239	15,631
1996-97	681,083	9,861,825	14,480
1997-98	10,990	1,685,859	15,189
1998-99	10,097	152,591	15,113
1999-00	66,627	769,179	11,545
2000-01	930,142	14,488,243	15,576

→ 2001-02.

TABLE 10
EXPORT OF SUGAR

YEAR	QUANTITY TONNES	VALUE IN RS. "000"	AVERAGE PRICE RS. PER TONNE.
1993-94	121,565	1,204,964	9,912
1994-95	315,886	3,770,558	11,936
1995-96	29,134	350,066	12,016
1996-97	-	-	-
1997-98	210,632	2,897,750	13,757
1998-99	906,602	11,549,170	12,739
1999-00	-	-	-
2000-01	-	-	-

→ 2001-02.

DATA IN TABLE 9 AND 10 ARE SHOWN FOR FISCAL YEAR
Source: Federal Bureau of Statistics.

TABLE 11

EXPORT OF MOLASSES

YEAR	QUANTITY TONNES	VALUE IN RS. "000"	AVERAGE PRICE RS. PER TONNE.
1981-82	472,586	275,757	583.50
1982-83	602,740	269,556	447.20
1983-84	386,438	259,531	671.60
1984-85	683,185	354,336	518.65
1985-86	768,222	477,390	621.42
1986-87	500,086	420,920	841.70
1987-88	798,523	687,584	861.07
1988-89	753,239	576,727	765.66
1989-90	1,166,012	1,046,452	897.46
1990-91	776,071	823,636	1,061.29
1991-92	947,000	1,351,762	1,427.41
1992-93	892,618	1,396,111	1,564.06
1993-94	703,450	993,627	1,412.50
1994-95	769,636	1,213,545	1,576.78
1995-96	806,399	1,852,514	2,297.26
1996-97	1,056,134	2,021,755	1,914.30
1997-98	1,359,328	2,542,504	1,870.41
1998-99	1,688,505	1,802,899	1,067.75
1999-00	1,748,000	2,200,000	1,258.58
2000-01	1,190,012	2,456,573	2,066.00

2001-02.

SOURCE: FEDERAL BUREAU OF STATISTICS
DATA IN TABLE 11 IS FOR FISCAL YEAR

TABLE 12

EXPORT OF FERMENTATION ETHYL ALCOHOL
(NOT DENATURED)

YEAR	QUANTITY LTRS.	VALUE RS."000"	AVERAGE PRICE PER LTR.
1981-82	3,471,980	20,368	05.86
1982-83	6,581,400	20,140	03.19
1983-84	6,935,729	25,302	03.64
1984-85	2,100,000	8,862	04.22
1985-86	3,970,000	17,485	04.40
1986-87	-	-	-
1987-88	2,100,000	11,140	05.30
1988-89	4,130,971	25,931	06.27
1989-90	8,250,000	60,133	07.29
1990-91	8,229,448	61,090	07.42
1991-92	7,636,000	55,332	07.25
1992-93	8,660,900	90,213	10.42
1993-94	13,206,697	125,866	09.54
1994-95	6,050,200	68,137	11.26
1995-96	1,166,000	16,856	14.19
1996-97	1,232,145	18,273	14.83
1997-98	4,107,000	69,646	16.96
1998-99	6,722,000	115,788	17.22
1999-00	7,608,000	136,364	17.92
2000-01	10,061,000	208,082	21.00

2001-02.
SOURCE : FEDERAL BUREAU OF STATISTICS
DATA IS FOR FISCAL YEAR.

**FORMER CHAIRMEN OF
PAKISTAN SUGAR MILLS ASSOCIATION**

1965-66	Dr. S.M. Momen
1966-67	Colonel Muzaffar Khan
1967-68	Mr. M Hussain
1968-69	Nawabzada M. Munir Khan
1969-70	Mr. Hussain
1970-71	Mr. Khaliq Dar Noon
1971-72	Mr. Ahmed Ibrahim
1972-73	Mr. Taj Muhammad Khanzada
1973-74	Ch. Bashir Ahmed
1974-75	Mr. M. Akram
1975-76	Mr. Taj Muhammad Khanzada
1976-77	Mr. Mian Bashir Ellahi
1977-78	Mr. M. Akram
1978-79	Mr. Taj Muhammad Khanzada
1979-80	Malik Manzoor Hayat Noon
1980-82	Mr. M. Akram
1982-83	Mr. Taj Muhammad Khanzada
1983-84	Mr. Altaf M. Saleem
1984-85	Mr. M. Akram
1985-86	Mr. Taj Muhammad Khanzada
1986-87	Mr. Altaf M. Saleem
1988-90	Mr. M. Akram
1990-92	Syed Abbas Shah
1992-94	Mr. Altaf M. Saleem
1994-96	Mr. Ismail Zakaria
1996-98	Mr. Abbas Sarfaraz Khan
1998-2000	Mr. S. M. Tahir
2000-2002	Mr. Ashraf W. Tabani

Mills

Adan

345-A

Opp:

Laho

Ashr

128 T

Laho

Baba

1st Fl

4- Sh

Laho

Brot

135 I

Laho

Char

40 -A

Laho

Chat

7- A,

Laho

Chis

88 -

Gult

Cres

New

Nish

Fati

2nd F

Opp

LMC

Fau

Fau

Hea

Cha

**PAKISTAN SUGAR MILLS ASSOCIATION
ZONE WISE LIST OF SUGAR MILLS
LOCATION AND DISTRICT**

Mills Name & Address	PUNJAB ZONE Tel & Fax	Mills Location/ Dist.
Adam Sugar Mills Ltd., 345-A/1 , Gulberg-III Opp: Wyeth Laboratories , Lahore	Fx. (042)-575216 (021)-2417812-7 (021)-2427560	Chistian Bahawalnagar
Ashraf Sugar Mills Ltd., 128 Tufail Road, Lahore Cantt.	Fx. (042)-6655002-3 (042)-6653515	Ashrafabad Bahawalpur
Baba Farid Sugar Mills Ltd., 1 st Floor Nawa-I- Waqt House 4- Shahrae Fatima Jinnah Lahore.	Fx. (042)-6368671 (042)-6306747	Okara Okara
Brother Sugar Mills Ltd., 135 Upper Mall, Lahore.	Fx. (042)-5757013-6 (042)-5710417	Chunian Kasur
Chanar Sugar Mills Ltd., 40 -A, Lawrence Road Lahore	Fx. (042)-6302118-9 (042)-6362054-5	Tandlianwala Faisalabad
Chaudhry Sugar Mills Ltd., 7- A, New Muslim Town Lahore	Fx. (042)-5857234-5 (042)-5857232	Gojra Toba Tek Singh
Chishtia Sugar Mills Ltd., 88 - A, Canal Park, Gulberg – II, Lahore.	Fx. (042)-5752124-6 (042)-5760329	Sillanwali Sargodha
Crescent Sugar Mills Ltd., New Lahore Road, Nishatabad, Faisalabad	Fx. (041)-750363 (041)-750366	Nishtabad Fais alabad
Fatima Sugar Mills Ltd., 2 nd Floor, Trust Plaza, Opp. Telephone Exchang LMQ Road, Multan.	Fx. (061)-546318 (061)-546218 (061)- 511677	Kot Addu Muzafargarh
Fauji Sugar Mills Ltd., Fauji Foundation (Sugar Division), Head Office Tippu Road, Chaklala	Fx. (051)-5951721-40 (051)-5951742	Sangla Hill Sheikhupura

Mills Name & Address

Tel & Fax

Mills Location / Dist.

Fecto Sugar Mills Ltd.,
Room # 101 & 102,
1st Floor Panorama Centre,
Raja Ghazanfar Ali Road
Karachi

Fx.

(021)-5682178
(021)- 5684709

Darya Khan
Bhakkhar

Gojra Samundri Sugar Mills Ltd.,
Monnoo House,
3- Montgomery Road
Lahore

Fx.

(042)-6312978-9
(042)-6312982

Gojra
Faisalabad

Haseeb Waqas Sugar Mills Ltd.,
103/ B-1, M. M Alam Road
Gulberg III Lahore

Fx.

(042)-5713969
(042)-5758467

Nankana Sahib
Sheikhpura

Husein Sugar Mills Ltd.,
2nd Floor Gulberg Centre
Main Boulevard Gulberg
Lahore

Fx.

(042)-5762089-90
(042)-5712680

Jaranwala
Faisalabad

Hamza Sugar Mills Ltd.,
A/22, S.I. T. E. Maripur Road
Karachi

Fx.

(021)-2564594
(021)-2561873

Jetha Bhutta
Rahimyar Khan

Indus Sugar Mills
93-B, New Muslim Town,
Lahore

Fx.

(042)-5862801-2
(042)-5835180

Kot Bahadur
Rajan Pur

Ittefaq Sugar Mills Ltd.,
M. M Alam Road,
107/B, Gulberg III
Lahore.

Fx.

(042)-5765021-6
(041)-5759546

Pakpattan
Pakpattan

JDW Sugar Mills Ltd.,
32-N, Gulberg- II
Industrial Area,
Lahore

Fx.

(042)-5761542-3
(042)-5761544

Mouza Shirin
Rahimyar Khan

Kamalia Sugar Mills Ltd.,
Askari Villas No. 2
Sarwar Road,
Lahore Cantt Near Garrison Cinema

Fx.

(042)-6674345
(042)-6668029

Kamalia
Toba Tek Singh

Kashmir Sugar Mills Ltd.,
107-B, M.M. Alam Road,
Gulberg III, Lahore

Fx.

(042)-5765021-6
(042)-5759546

Shorkot
Jhang

Kohinoor Sugar Mills Ltd.,
18 - Main Gulberg
Lahore II

Fx.

(042)-5750174
(042)-5710972

Jauharabad
Khushab

/ Dist.

Mills Name & Address	Tel & Fax	Mills Location / Dist.
Layyah Sugar Mills Ltd., 17- G Gulberg III Lahore	Fx. (042) 5883220 (042)5883219	Layyah Layyah
National Sugar Mills Ltd., 146 M Block, Gulberg III Lahore	Fx. (042)-5835517 (042)-5838400	Bhalwal Sargodha
Noon Sugar Mills Ltd., 6 th Floor, EFU Building Jail Road Lahore	Fx. (042)-5715845-8 (042)-5715698	Bhalwal Sargodha
Pahrianwali Sugar Mills Ltd., F- 1/14, Canal Cottage New Muslim Town Lahore	Fx. (042)-5868780 (042)-5868547	Lalian Jhang
Pattoki Sugar Mills Ltd., T-09 , 3 rd Floor, Hafeez Centre, 75-E /1, Gulberg III Lahore	Fx (042)-5711061-5 (042) 5711068.	Pattoki Kasur
Punjab Sugar Mills Ltd., 20- E -I (C) Gulberg – III Lahore	Fx. (042)-5712487-8 (042)-5710879	Mian Channu Khanewal
Phalia Sugar Mills Ltd., 20- E -I (C) Gulberg – III Lahore	Fx. (042)-5712487-8 (042)-5710879	Phalia Mandi Bahauddin
Ramzan Sugar Mills Ltd., 7- A New Muslim Town Lahore	Fx. (042)-5857234-5 (042)-5857232	Chiniot Jhang
Shahtaj Sugar Mills Ltd., 39/A Zafar Ali Road Gulberg-V, Lahore	Fx. (042)5710482-4 (042) 5711904	Mandi Bahauddin Gujrat
Shakarganj Mills Ltd., Management House Toba Tek Singh Road <u>Jhang</u>	Fx. (0471)-614971 (0471)-620270	Jhang Jhang
Sheikhoo Sugar Mills Ltd., 11-Commercial Area, L.C.C.H.S, Lahore , Cantt	Fx. (042)-5728901 (042)-5720745	Kot Adu Muzafargarh
Tandlianwala Sugar Mills Ltd., 32- N-A, Gulberg-II Industrial Area, Lahore	Fx. (042)-5715081 (042)-57109299	Kanjwani Faisalabad

Mills Name & Address	Tel & Fax	Mills Location / Dist.
United Sugar Mills Ltd., 29-B, Ch. Zahoor Ellahi Road, Gulberg II, Lahore.	N.A	Sadiqabad Distt. Rahim Yar Khan
Abdullah Sugar Mills Ltd., 103/B-1, M.M. Alam Road, Lahore	<u>Non member Sugar Mills</u> Fx. (042)-5713969 (042)-5758467	Depalpur Okara
Qand Ghar Sugar Mills	Not available	Shahkot Faisalabad
Yousaf Sugar Mills Ltd., 103-/B-1, M.M. Alam Road, Lahore	Fx. (042)-5713969 (042)-5758467	Shahpur Sargodha

SINDH ZONE

Mills Name & Address	Tel & Fax	Mills Location / Dist.
Al-Abbas Sugar Mills Ltd., 4 th Floor, PNSC Building, Moulvi Tamizuddin Khan Road, Karachi	Fx. 021-5611895-96 021- 5611724 021- 5610778	Mirwah Gorchani Mirpurkhas
Al-Asif Sugar Mills Ltd., 4 th Floor, Bank House No.2 Habib Square, M.A. Jinnah Road, Karachi	Fx. 021-2427073 021-2427216 021- 2429092	Garho Thatta
Al-Noor Sugar Mills Ltd., 96-A, Sindhi Muslim Society, Karachi	Fx. 021-4550161-63 021-4551990 / 4559863 021-4556675 / 4551370	Taluka Moro Nawabshah
Ansari Sugar Mills Ltd., 41-Kg, Block 6, P.E.C.H.S, Karachi 75400	Fx. 111-484-848 021-4531637 / 4531642 021-4546456, 4535374	Matli Hyderabad
Army Welfare Sugar Mills Badin	Fx. (0227) 61205, 61970 (0227) 61733	Badin
Bawany Sugar Mills Ltd., 4 th Floor, Bank House # 2, Habib Square, M.A. Jinnah Road, Karachi	Fx. 021-2427216, 2427073 021-24299092	Talhar Badin
Dewan sugar Mills Ltd., 3-A, Dewan Centre, Lalazar, Beach Hotel Road, Karachi	Fx. 111-313-786 021- 5611098-9 021-5610765	Budho Talpur Thatta

/ Dist.

Khan

/ Dist.

Mills Name & Address	Tel & Fax	Mills Location
Digri Sugar Mills Ltd., 48 J /1 Block 6, P.E.C.H.S. Karachi	Fx. 021-4541195-8 021- 4534501	Digri Mirpurkhas
Faran Sugar Mills Ltd., 3 rd Floor, Bank House # 1, Habib Square, M.A. Jinnah Road, Karachi	Fx. 021-2418050-4 021-2421010	Sheikh Bhirkio Hyderabad
Fauji Sugar Mills Khoski Badin	Fx. (0227711) 217-8 (0227711) 224	Khoski Badin
Fauji Sugar Mills Tando Mohammad Khan, Dist. Hyderabad	Fx. (0224) 41946 / 41440 (0224) 41122	Tando Muhammad Khan Hyderabad
Habib Sugar Mills Ltd., 3 rd Floor, Imperial Court, Dr. Ziauddin Ahmed Road, Karachi	Fx. (021)- 5680036-9 (021)- 5684086	Nawabshah
Khairpur Sugar Mills Ltd., ST. 10, D/14, Jumani Arcade Main University Road, Karachi	Fx. (021)- 4931021-4 (021)- 4933313	Noroo Dhoro Khairpur
Larr Sugar Mills Ltd., 16-E, Block 6, Rashid Minhas Street, P.E.C.H.S Karachi.	Fx. (021)- 4545591-4 (021)-4537720	Deh Kinjhar -Sajawal Thatta
Matiari Sugar Mills Ltd., C-48, KDA Scheme No.1 Karachi. 75350	Fx. (021)-4521382, 4529698 (021)- 4541734	Matiari Hyderabad
Mehran Sugar Mills Ltd., 8 th Floor, Adamjee House, I.I. Chundrigar Road, Karachi.	Fx. (021)-2417131-4 (021)- 2416477	Tando Allah Yar Hyderabad
Mirpurkhas Sugar Mills Ltd., 2 nd Floor, Modern Motors House, Beaumont Road, Karachi.	Fx. (021)-562565-7 / 5682569-70 (021)-5682839	Mirpurkhas Mirpurkhas
Mirza Sugar Mills Ltd., 10 th Floor, Lakson Square, Building No. 1, Sarwar Shaheed Road, Karachi	Fx. (021)-5680151 (021)- 5680183	Deh Charo Tappo Badin

Mills Name & Address	Tel & Fax	Mills Location / Dist.
Pangrio Sugar Mills Ltd., 10 th Floor Lakson Square, Fx. Building No. 1 Sarwar Shaheed Road, Karachi	(021)- 5680151 (021)-5680183	Deh Rajauri-2 Badin
Ranipur Sugar Mills Ltd., 1308 Chapal Plaza, Hasrat Mohani Road, Fx. Off. I.I. Chundrigar Road, Karachi	(021)-2411368-9 (021)-2413547	Ranipur Khairpur
Sakrand Sugar Mills Ltd., 41-K Block 6 , P.E.C.H.S., Karachi Fx.	111-484-848 (021)- 4531642, 4531637 (021)- 4535374, 4546456	Qazi Ahmed Nawabshah
Sanghar Sugar Mills Ltd., 101- Ocean Centre, Talpur Road, Fx. Karachi	(021)-2427171-2 (021)- 2410700	Sindhri Sanghar
Seri Sugar Mills Ltd., 1 st Floor, Hassan Ali Centre, Opp. M.W. Tower, Fx. M.A. Jinnah Road, Karachi.	(021)-4218389-90 / 2429330 (021)-2437828 (021)-2413600	Deh Norai Jagir Hyderabad
Shahmurad Sugar Mills, Ltd., 96-A, Sindhi Muslim Society, Fx. Karachi	(021)-4550161-3 / 4550631 (021)-4556675 / 4551370	Jhok Sharif Thatta
Sindh Abadgar's Sugar Mills Ltd., 164-L Block 3, P.E.C.H.S., Karachi Fx	(021)-4559741 (021)-4557936 (021)-4558109	Deenpur Hyderabad

Non Member Sugar Mills

Bachani Sugar Mills Ltd., Sanjar Chang, Tando Allah Yar,	(021)-2627607	Tando Allah Yar Hyderabad
Dadu Sugar Mills Ltd., 6 th Floor, Sheikh Sultan Trust Building Beaumont Road, Karachi Fx.	(021)-5686051-3 (021)-5684721	Piarogoth Dadu
Kiran Sugar Mills Ltd., 40-B, East Avenue, Phase 1, Defence Housing Authority, Fx. Karachi	(021)-545297 (021)-5882569 (021)-5887883	Duber Road Sukkur
Larkana Sugar Mills Ltd., Naudero, Larkana	(0741) 447495 (0741) 447216	Naudero Larkana

Dist.	Mills Name & Address	Tel & Fax	Mills Location / Dist.
	Najma Sugar Mills Ltd., 6- Jabbar Centre, 2 nd Floor , Block-9, Near Schon circle, Clifton , karachi	Fx. (021)5831082 (021) – 5831069	Jhuddo Mirpurkhas
	Tharparkar Sugar Mills Ltd., 14-C , 5 th Commercial Lane, Zamzama Boulevard, Defence Housing Authority, Karachi	Fx. (021)-5863730-1 (021)-5863729	Tharparkar Mirpurkhas
	Thatta Sugar Mills Ltd., 6 th Floor, Sheikh Sultan Trust Building, Beaumont Road, Karachi	Fx. (021)-5686051-3 (021)-5684721	Deh Bijora Thatta

N.W.F.P ZONE

Mills Name & Address	Tel & Fax	Mills Location / Dist.
Bannu Sugar Mills Ltd., Serai Naurang Dist. Bannu	Fx (09261)2005 (09261)2309 (09261)2302	Serai Naurang Bannu
Chashma sugar Mills Ltd., Gunner Lane Off II Fort Road, Peshawar cantt	Fx (0961)750090 (0961)750091 (0961)750092	D.I. Khan
Frontier Sugar Mills Ltd., Gunner Lane Off II, Fort Road Peshawar cantt.	Fx (0931)551041 (0931)551049 (0931)62989	Takht-I- Bhai Mardan
Khazana Sugar Mills Ltd., House #332, St#35, Sector F-11/13, Islamabad	Fx. 051-2294167 051-2211892	Peshawar
Premier Sugar Mills Ltd., Mardan N.W.F.P.	Fx. 0931-62051-2 0931-62989	Mardan
Saleem Sugar Mills Ltd., 65 Amin Building, The Mall, Lahore.	Fx. 042-7321043 042-7122378	Charsadda

AZAD KASHMIR

Mian Mohammad sugar mills Ltd.,	Not available	Mirpur Azad Kashmir
--	---------------	--------------------------------------

**AV. YIELD & RECOVERY OF SUGARCANE
IN MAIN SUGAR PRODUCING COUNTRIES**

COUNTRY	YIELD/HA IN TONNES	RECOVERY % RAW VALUE	REFINED VALUE
Argentina	49.2	10.3	9.63
Australia	102.3	13.8	12.90
Brazil	62.5	11.6	10.85
China	62.8	8.7	8.13
Colombia	132.8	11.7	10.94
Cuba	35.0	10.1	9.44
Egypt	86.3	12.4	11.60
Guatemala	81.0	10.5	9.82
India	71.1	10.4	9.73
Indonesia	76.5	7.5	7.02
Mexico	77.8	11.0	10.29
Pakistan	47.0	9.2	8.61
Philippines	62.7	7.9	7.39
S. Africa	75.0	11.1	10.38
Thailand	61.0	11.0	10.29
U.S. Mainland	72.9	12.3	11.50
World Av.	63.7	10.5	9.82

Source :- Sugar and Sweetner USDA

**NATIONAL SUGAR CROP / MARKETING YEARS
OF MAIN SUGAR PRODUCING / CONSUMING COUNTRIES**

Jan/Dec 1/	Apr/Mar	May/Apr	Jun/May	Jul/Jun
Egypt Kenya Malaysia	Indonesia South Africa	Brazil	Argentina Mauritius	Australia Bangladesh Spain
Aug/Jul	Sep/Aug	Oct/Sep	Nov/Oct	Dec/Nov
Romania	Canada Colombia Italy South Korea Philippines Sudan Switzerland Turkey United Kingdom Venezuela	China Costa Rica France Germany India Japan Pakistan Panama Poland Sweden United States European Union Russia Ukraine	Cuba Guatemala Mexico Nigeria Taiwan	Thailand

Source:- Sugar:- World Market and Trade
U.S.D.A November' 2000

**Per Capita Consumption Of Refined Sugar (2000-01)
Different Countries Of The World**

S.No.	Country	Population in "000"	Consumption in "000" Tonnes	Per capita Sugar Consumption Kg.
1	Afghanistan	22,130	N.A	
2	Algeria	29,050	878	30.21
3	Argentina	35,670	1,434	40.19
4	Australia	18,530	888	47.91
5	Bangladesh	122,010	437	3.58
6	Brazil	159,880	8,961	56.05
7	Canada	30,290	1,162	38.35
8	Chile	14,620	630	43.09
9	China	1,243,740	7,822	6.29
10	Colombia	36,160	1,247	34.48
11	Egypt	62,010	2,123	34.24
12	France	58,610	2,184	37.27
13	Germany	82,070	2,854	34.78
14	India	1,000,000	16,762	16.76
15	Indonesia	201,390	3,378	16.77
16	Iran	60,690	2,174	35.82
17	Iraq	21,180	581	27.45
18	Italy	57,520	1,458	25.35
19	Japan	125,640	2,674	21.28
20	Kenya	33,140	549	16.55
21	Korea, South	45,990	1,036	22.52
22	Malaysia	20,670	1,061	51.32
23	Mexico	96,400	4,318	44.79
24	Nigeria	118,370	772	6.52
25	Pakistan	140,500	3,050	21.71
26	Philippines	73,530	1,894	25.76
27	Poland	38,650	1,676	43.36
28	Romania	22,570	508	22.53
29	Russia	147,100	5,993	40.74
30	Saudi Arabia	19,490	569	29.20
31	South Africa	43,340	1,318	30.41
32	Spain	39,320	1,288	32.75
33	Sudan	27,900	407	14.57
34	Sweden	8,850	383	43.30
35	Switzerland	7,090	355	50.09
36	Taiwan	21,000	522	24.88
37	Thailand	60,600	1,757	28.99
38	Turkey	63,750	1,803	28.28
39	United Kingdom	58,200	2,184	37.53
40	Ukraine	50,640	2,052	40.53
41	United States	267,900	8,850	33.04

Consumption Source : ED & F MAN Sept'2001

* Population from different sources may vary.

RANKING, MAIN SUGAR PRODUCING COUNTRIES

COUNTRY	SUGAR PRODUCTION "000" Tonnes (Ref. Value)	RANKING
Argentina	1,455	24
Australia	4,098	9
Brazil	16,373	2
China	6,298	4
Colombia	2,141	14
Cuba	3,391	10
Egypt	1,476	23
France	4,379	8
Germany	4,428	7
Guatemala	1,680	16
Italy	1,568	20
India	18,793	1
Indonesia	1,625	18
Mexico	4,720	6
Macedonia	2,047	15
Pakistan	2,466	13
Philippines	1,645	17
Russia	1,534	22
South Africa	2,695	11
Turkey	2,574	12
Thailand	4,864	5
Ukraine	1,575	19
U.K.	1,564	21
USA	7,206	3

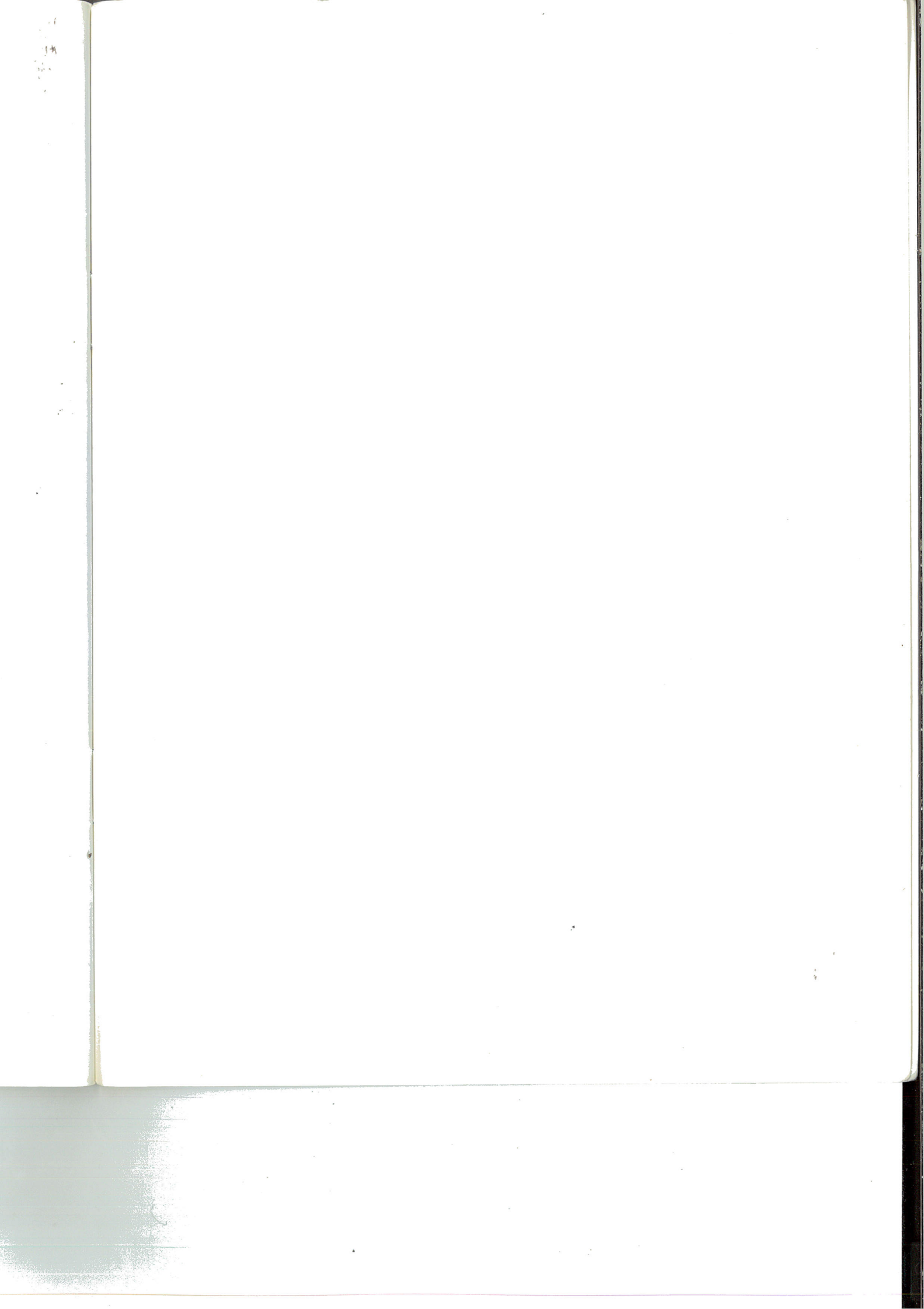
Note · Ranking based on sugar production 2000-2001
 Production includes Cane + Beet
 Indian data include khandsari sugar, a native type, semi-white centrifugal sugar

SUGAR AND SUGARCANE - I

Sugar Year (1 st Oct-30 th Sept.)	1994-95	1995-96	1996-97	1997-98
Beginning Stocks 1 st Oct.	309,309	264,689	103,553	413,290
Sugarcane Area HA.	1,009,000	963,100	964,500	1,056,200
Sugarcane produced	47,168,400	45,229,700	41,998,400	53,104,200
Yield / Ha-Tonnes	46.75	47.00	43.54	50.28
Cane Utilized by Mills	34,193,290	28,151,434	27,352,918	41,062,268
% age of utilization	75.49	62.24	65.13	77.32
Sugar Production (Cane)	2,983,101	2,449,598	2,378,751	3,548,953
Recovery % age	8.72	8.70	8.69	8.64
No. of Mills	66	66	68	71
Cane support. Price Punjab, NWFP / Sindh	20.5/ 20.75	21.5/ 21.75	24.25/ 24.5	35 / 36
Season's Av. Domestic retail price Rs. / Kg	14.36	17.86	21.46	18.75
World Ref. Sugar price US\$ / Tonne	396.12	383.75	319.21	272.46
Cane + Beet + Raw (Prod.)	3,001,472	2,470,034	2,393,362	3,555,228
Imports	4,274	166,432 ✓	728,501 ✓	26,345 26,789
Total Available	3,315,055	2,901,155	3,225,416	3,994,863
Mills sale upto 30/9 incl. Carry forward Stock	3,046,092	2,631,170	2,083,625	3,455,456
Export	327,591	100	-	477,331
Consumption / Marketing Mills Sale + import - (Export)	2,722,775	2,797,502	2,812,126	3,004,470
End Stocks	264,689	103,553	413,290	513,062

- World refined sugar prices US\$/ Tonne (Source LIFFE LONDON).
- Av. Domestic retail price Rs. / Kg (Source MINFAL)
- Sugarcane production & Utilization figures for 1999-2000 are controversial
- Refined value of Raw unrecorded imports 1996-97 & 1997-98 added to imports

SUGAR AND SUGARCANE – II				
Sugar Year(1st Oct-30th Sept.)	1998-99	1999-2000	2000-2001	Est. 2001-2002
Beginning Stocks 1 st Oct.	513,062	371,389	27,274	620,679
Sugarcane Area HA.	1,155,000	1,009,800	960,000	1,032,000
Sugarcane produced	55,191,100	46,332,600 *	43,590,000	48,000,000
Yield / Ha-Tonnes	47.77	45.88	45.41	46.50
Cane Utilized by Mills	42,994,911	28,982,711	29,408,723	36,000,000
% age of utilization	77.90	62.55*	67.47	75.00
Sugar Production (cane)	3,530,931	2,414,746	2,466,200	3,024,000
Recovery %age	8.21	8.33	8.39	8.40
No. of Mills	73	69	65	65
Cane support. Price Punjab, NWFP / Sindh	35 / 36	35/36	35/36	42/43
Season's Av. Domestic retail price Rs. / Kg	19.63	22.85	26.73	---
World Ref. Sugar price US\$ / Tonne	216.28	200.52	242.90	
Cane + Beet + Raw (Prod.)	3,541,763	2,429,364	3,015,994	3,040,000
Imports	3,697	420,621	627,992	----
Total Available	4,058,522	3,221,374	3,671,260	3,660,648
Mills Sales upto 30/9 incl. Carry forward Stock	3,683,436	2,773,479	2,422,477	
Export	648,230	22,160	-	-
Consumption / Marketing Mills Sale + Import – (Export)	3,038,903	3,171,940	3,050,496	3,260,648
End Stocks	371,389	27,274	620,791	400,000





**Pakistan Sugar Mills Association
Domestic Production, Availability & Consumption
Sugar Year Oct to Sept. 1992-2001**

